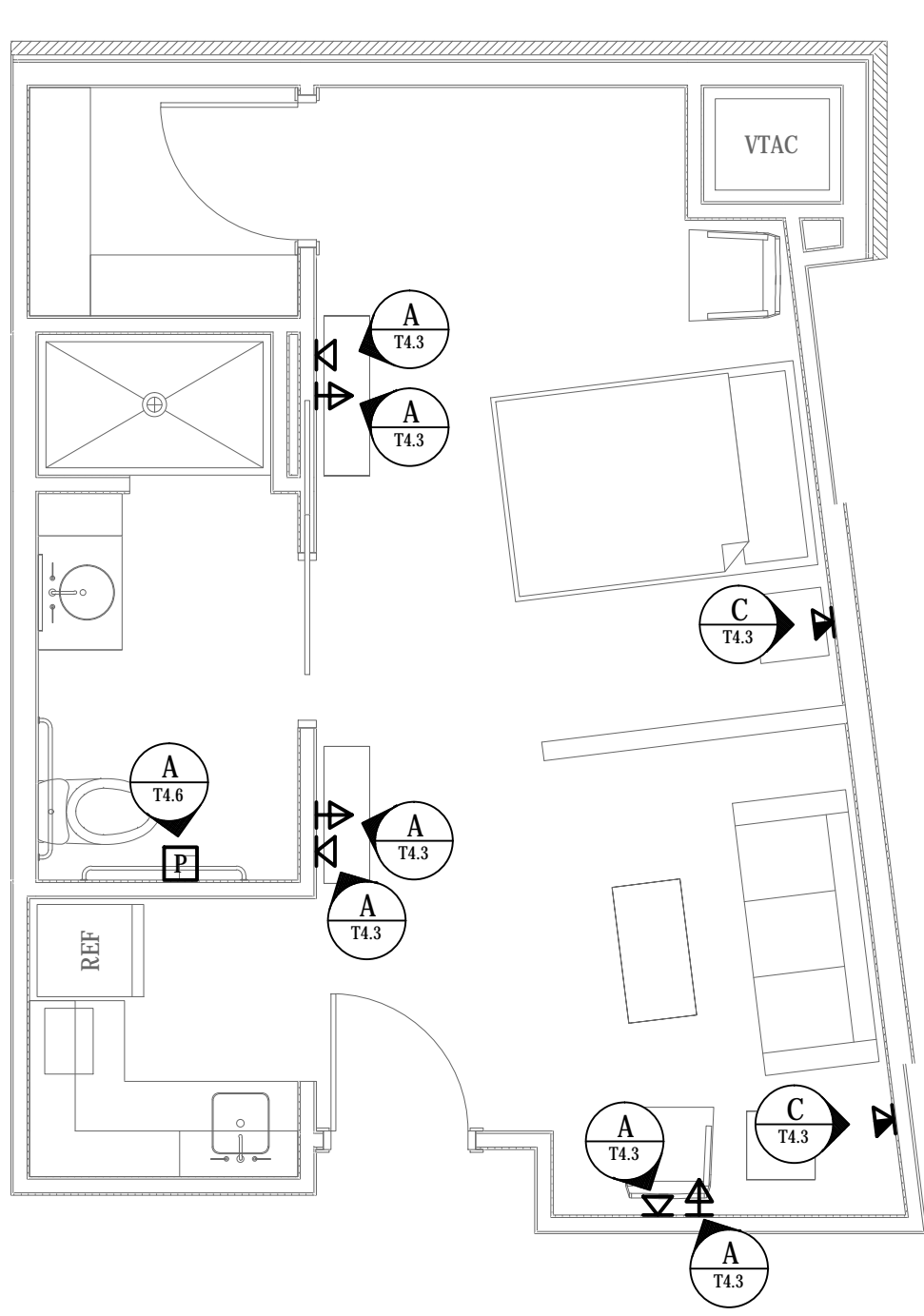
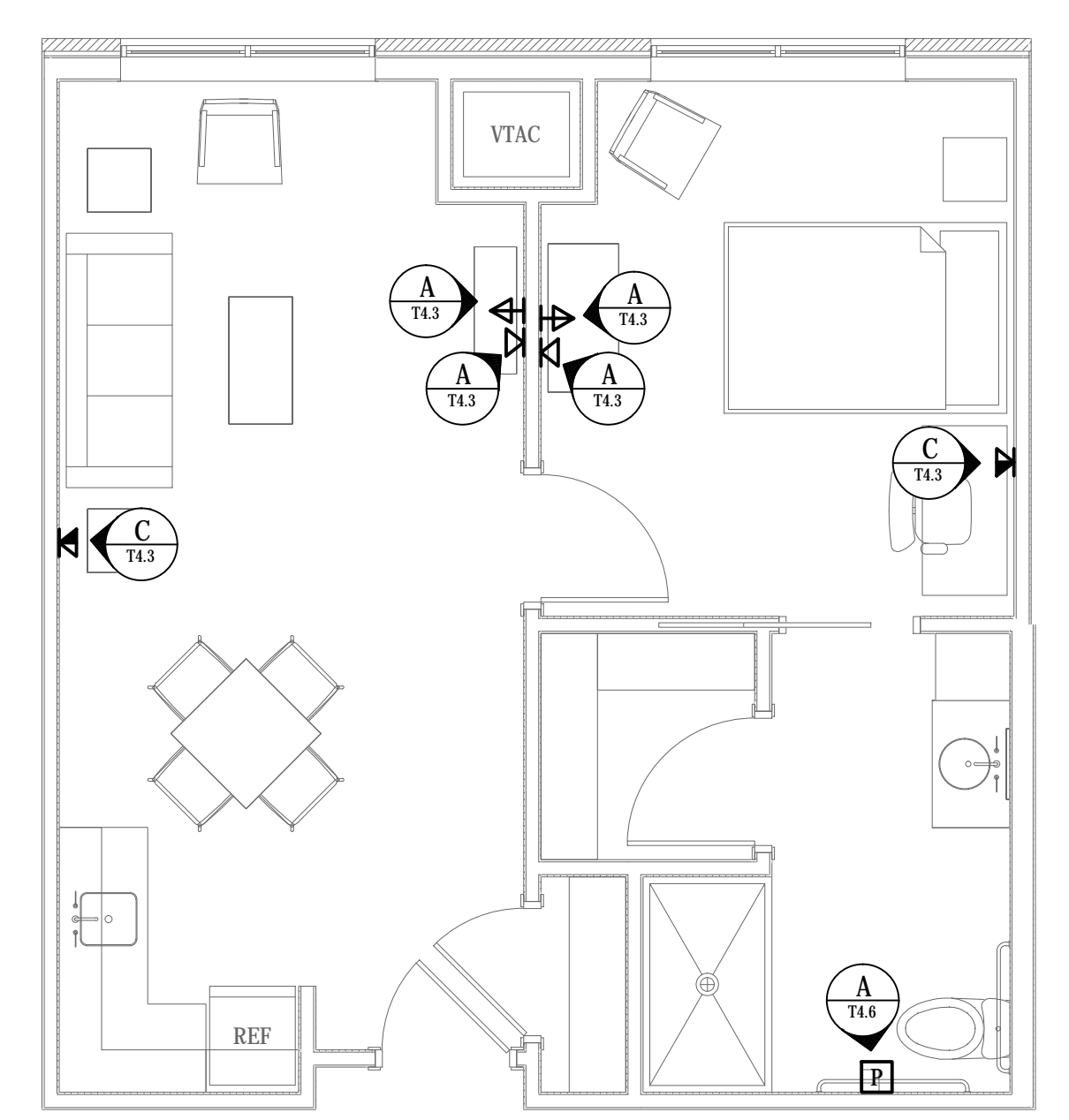


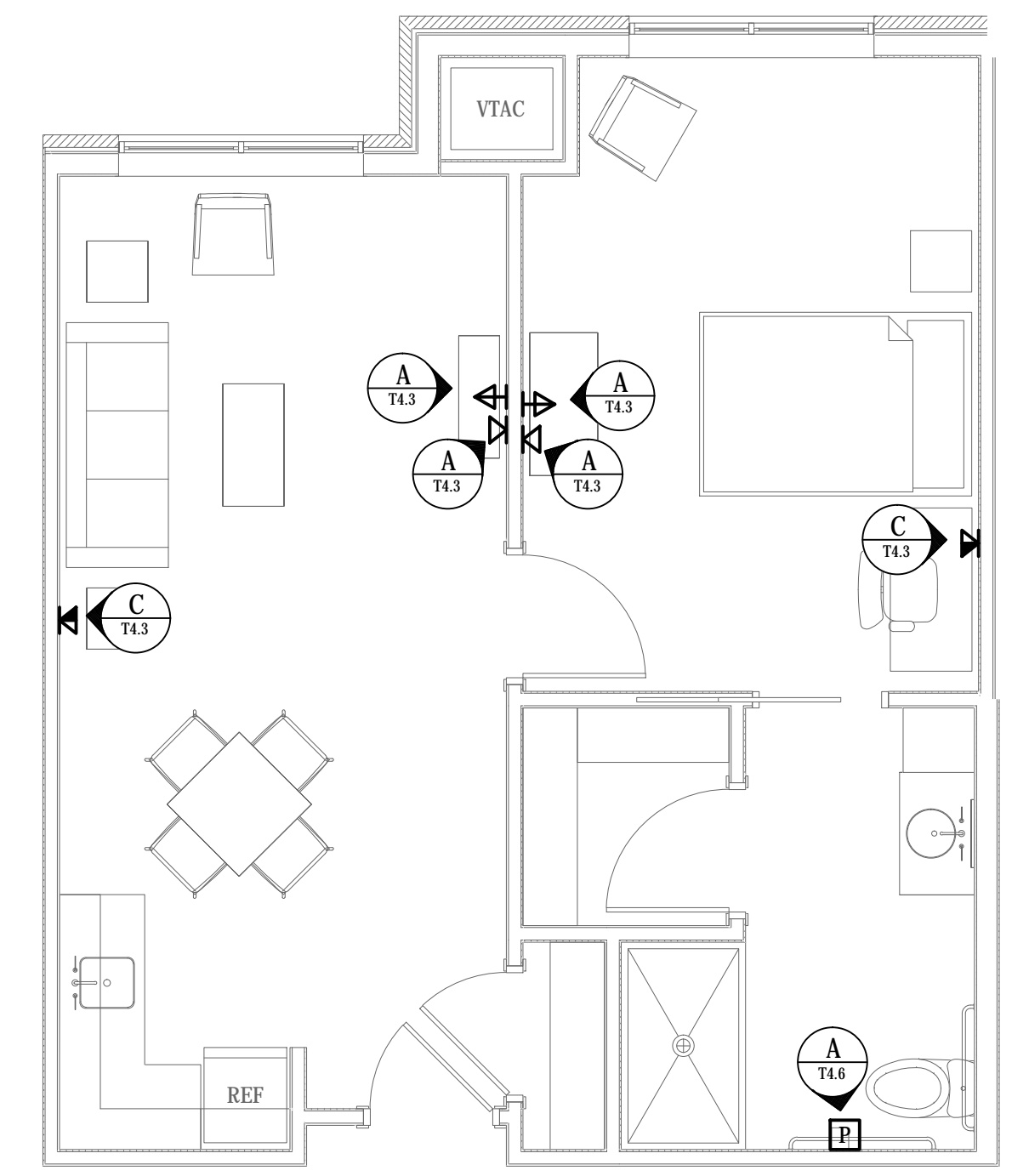
**C1** TELECOM/SECURITY/AV ELECTRONICS  
 UNIT PLAN : AL-A STUDIO  
 1/4" = 1'-0" 0 2 5 8 FT.



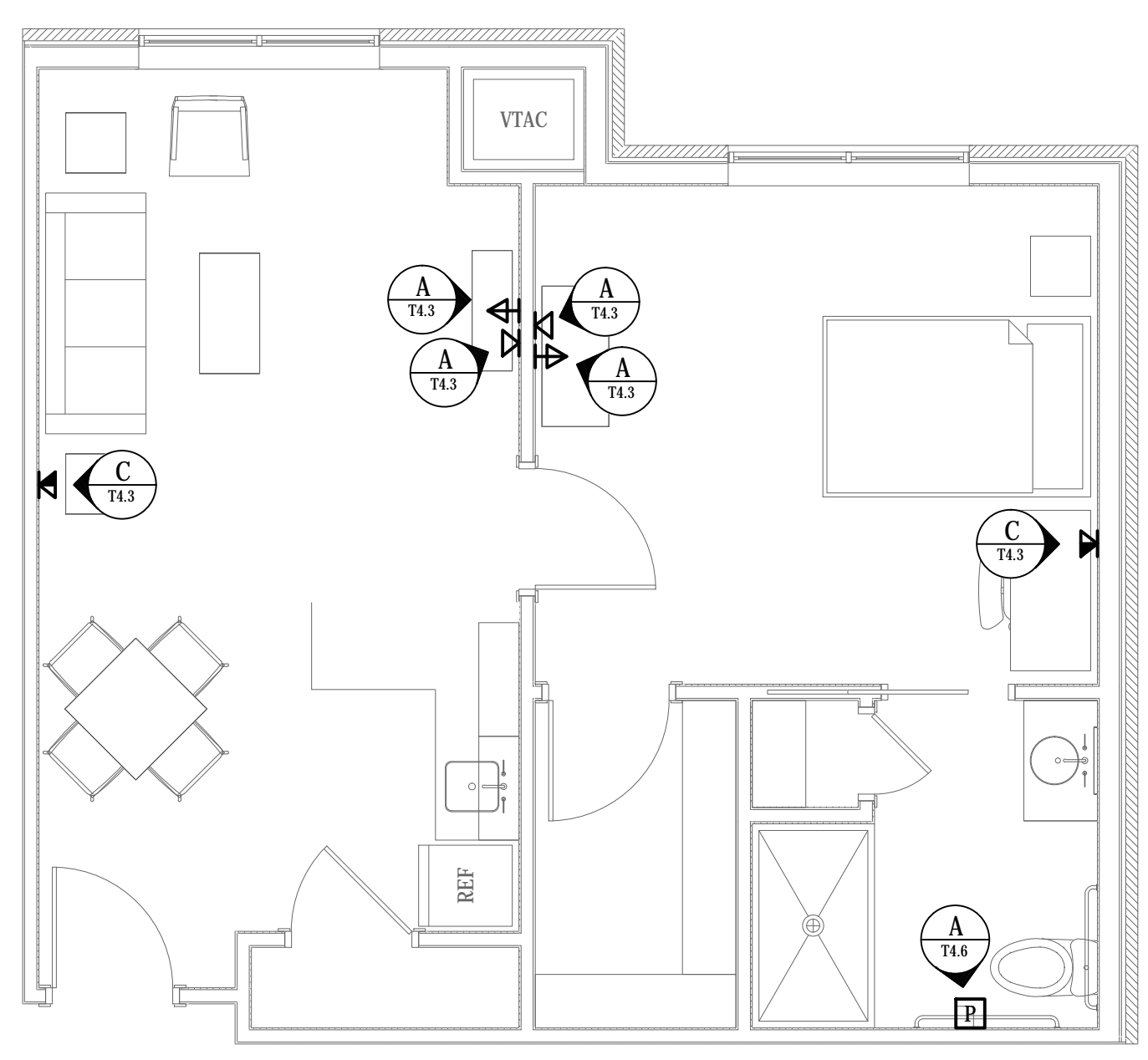
**C2** TELECOM/SECURITY/AV ELECTRONICS  
 UNIT PLAN : AL-A ALT1 STUDIO  
 1/4" = 1'-0" 0 2 5 8 FT.



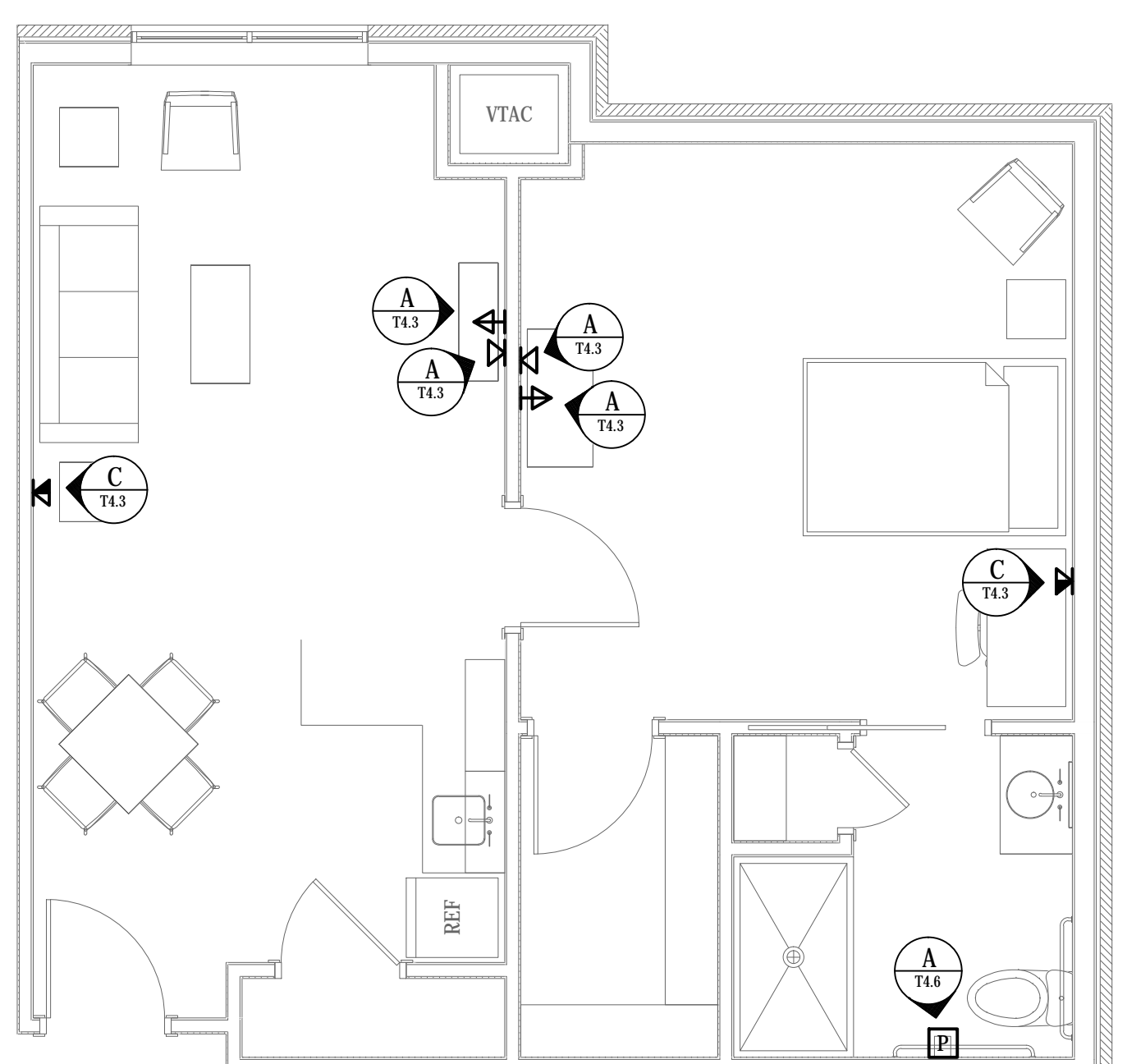
**C4** TELECOM/SECURITY/AV ELECTRONICS  
 UNIT PLAN : AL-B1 ONE BEDROOM  
 1/4" = 1'-0" 0 2 5 8 FT.



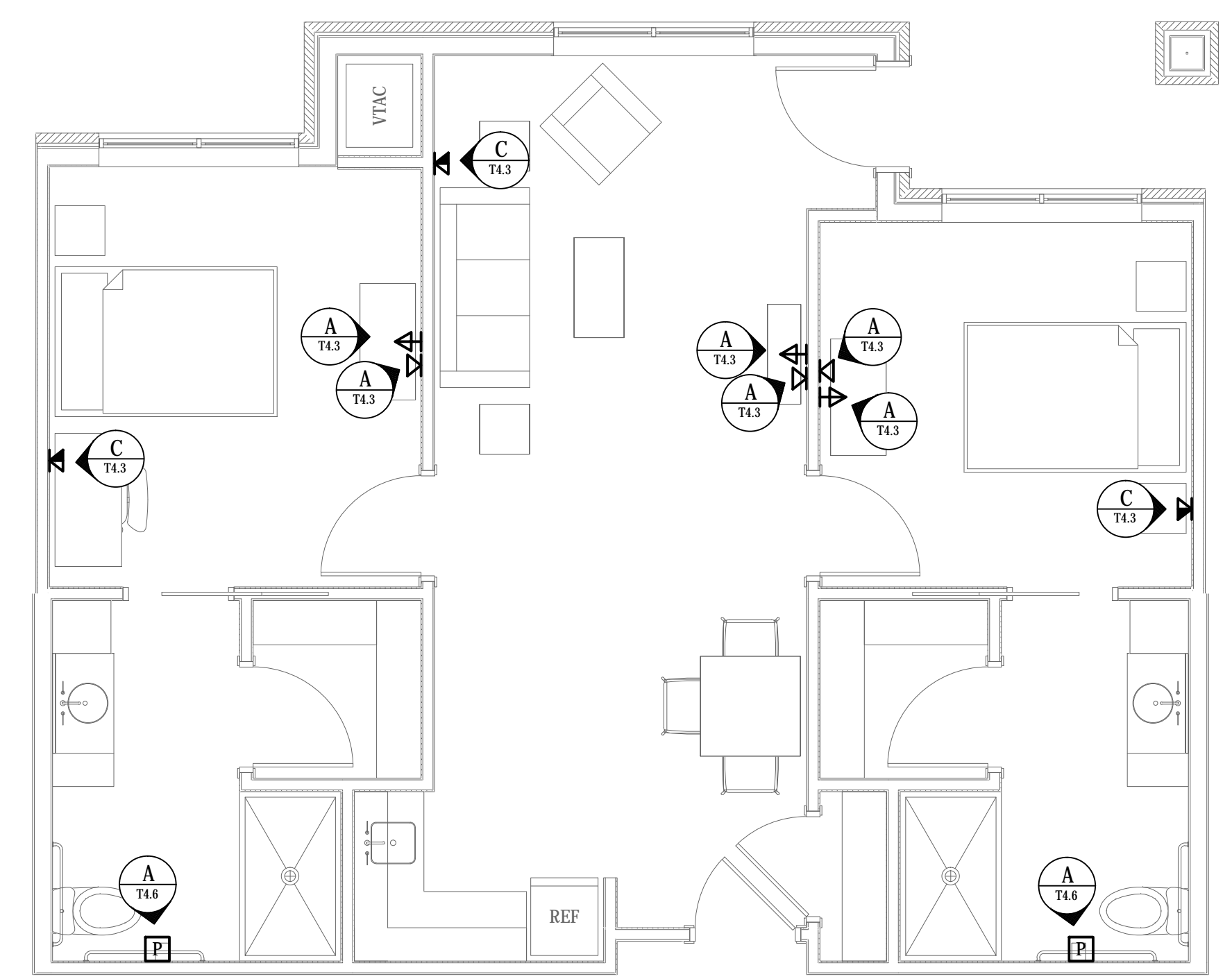
**C5** TELECOM/SECURITY/AV ELECTRONICS  
 UNIT PLAN : AL-B1X ONE BEDROOM  
 1/4" = 1'-0" 0 2 5 8 FT.



**A1** TELECOM/SECURITY/AV ELECTRONICS  
 UNIT PLAN : AL-C1 ONE BEDROOM DELUXE  
 1/4" = 1'-0" 0 2 5 8 FT.



**A3** TELECOM/SECURITY/AV ELECTRONICS  
 UNIT PLAN : AL-C1X ONE BEDROOM DELUXE (EXTENDED)  
 1/4" = 1'-0" 0 2 5 8 FT.



**A5** TELECOM/SECURITY/AV ELECTRONICS  
 UNIT PLAN : AL-D TWO BEDROOM  
 1/4" = 1'-0" 0 2 5 8 FT.

BIM Server: SERVER2015 - BIM Server 19/14017 Concorde Baton Rouge | Ver. 18.001 | Monday, February 22, 2016 | 3:34 PM