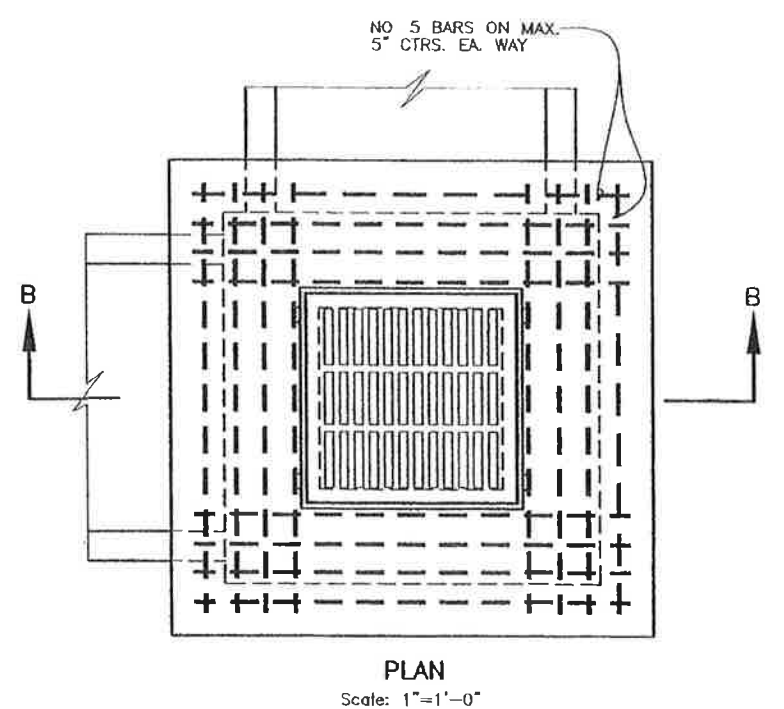
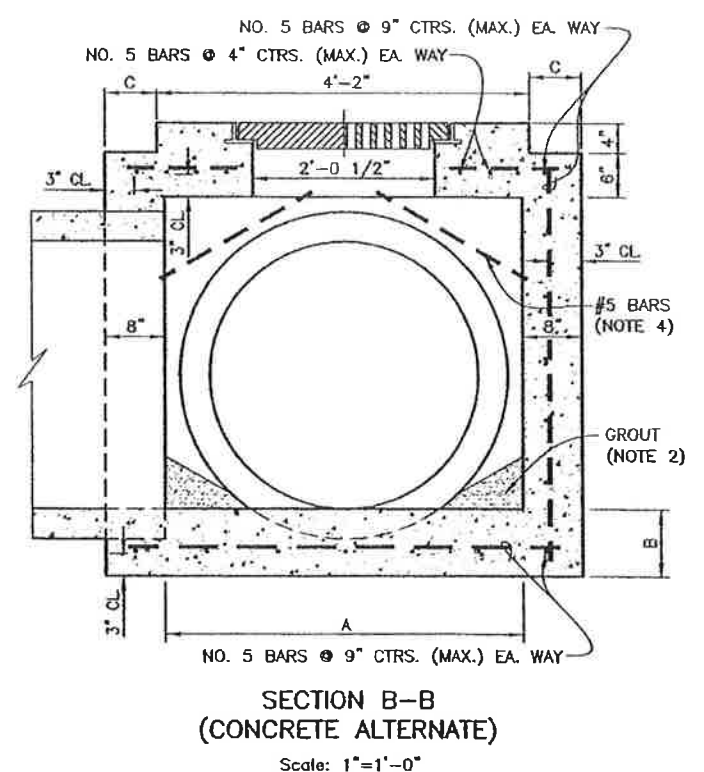
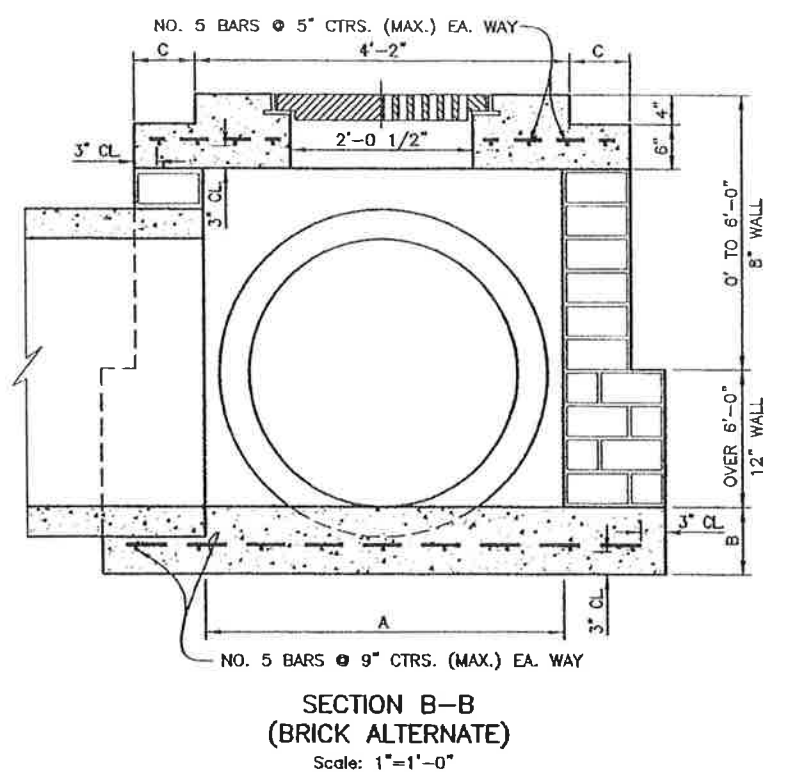


15" THRU 24" ROUND PIPE  
15" THRU 18" EQUIV. ARCH PIPE

- NOTES:**
- SEE STANDARD PLAN 702-99 FOR FRAME COVER DETAILS. TYPE 1 FRAME AND COVER REQUIRED.
  - PRECAST CONCRETE INLETS CONFORMING TO STANDARD PLAN 702-50 MAY BE FURNISHED. GROUT AS REQUIRED TO CREATE INVERTS.
  - THE CONTRACTOR SHALL NOT POUR ABOVE BOTTOM OF PAVEMENT SLAB UNTIL PAVING ADJACENT TO INLET HAS BEEN COMPLETED.
  - DIAGONAL REINFORCEMENT FOR PIPE LARGER THAN 36".



PIPE SIZE		DIMENSIONS		
ROUND PIPE	ARCH PIPE (ROUND EQUIV.)	A	B	C
30"	24"	3'-5"	8"	0
36"	30"	4'-0"	8"	0
42"	36"	4'-10"	9"	0'-4"
48"	-	5'-2"	9"	0'-6"
54"	42"	5'-9"	10"	0'-9 1/2"
60"	48"	6'-4"	10"	1'-1"
66"	54"	6'-11"	11"	1'-4 1/2"
72"	60"	7'-6"	11"	1'-8"
-	72"	8'-10"	11"	2'-4"



30" THRU 72" ROUND PIPE  
24" THRU 72" EQUIV. ARCH PIPE



DATE	DESCRIPTION	BY

STANDARD PLAN NO. 702-20	DATED January 18, 2008	SHEET NO. 1 OF 1
<b>CAST IRON GRATE INLET</b>		
ENGINEERING DIVISION DEPARTMENT OF PUBLIC WORKS CITY OF BATON ROUGE & PARISH OF EAST BATON ROUGE		
DESIGNED R. ELLIS	DRAWN G. VANNICE	CHECKED R. ELLIS
		APPROVED B. HARMON