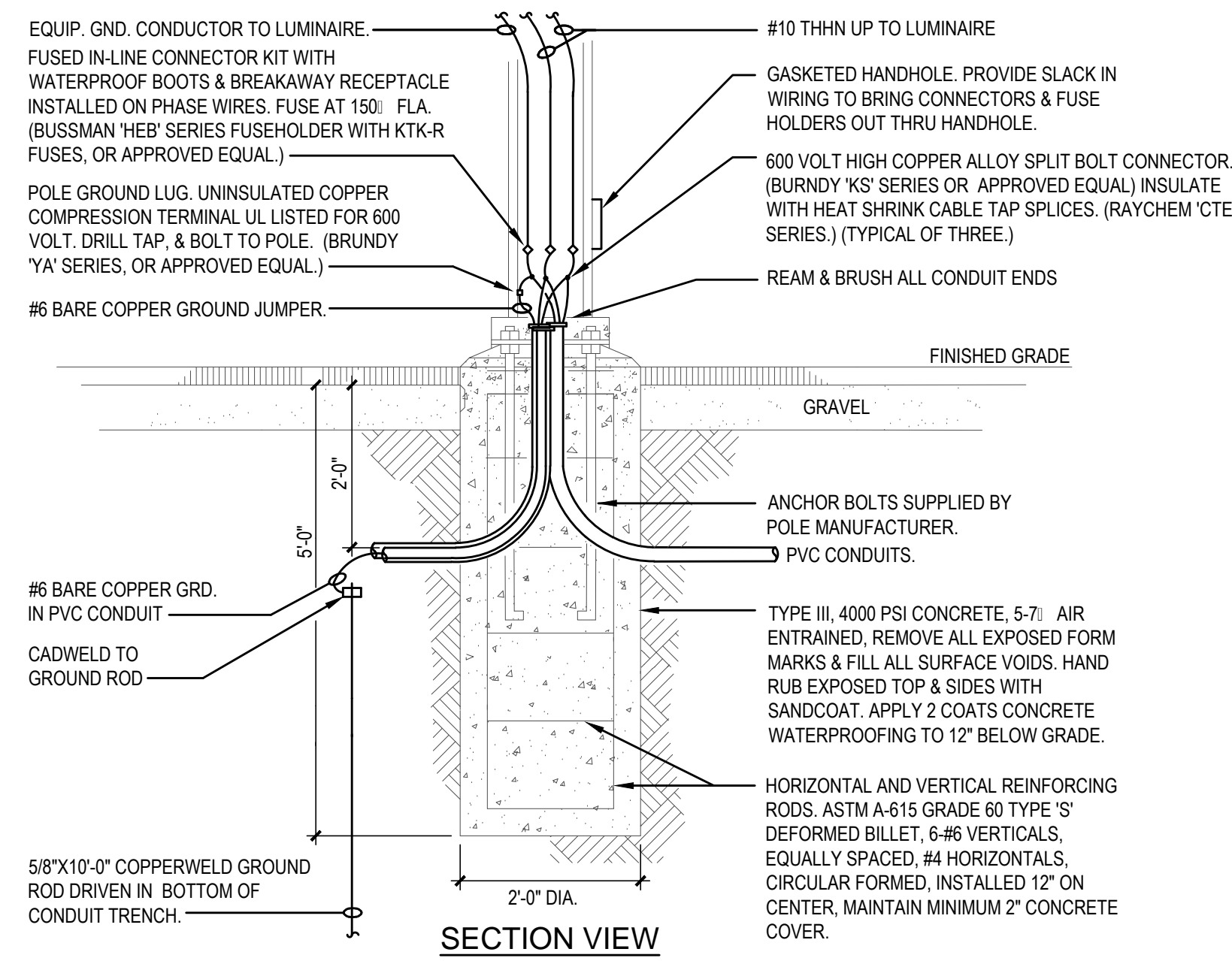
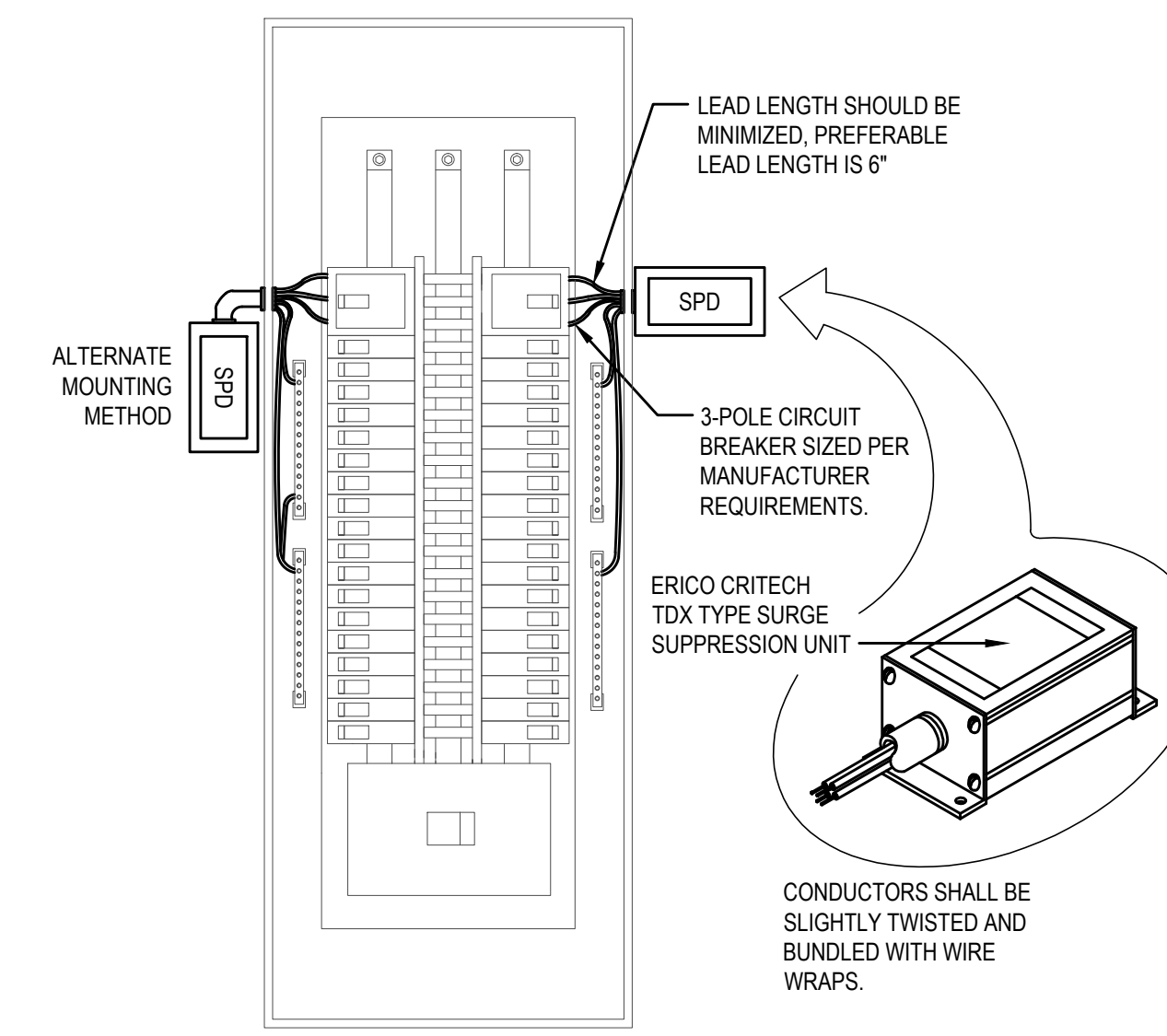


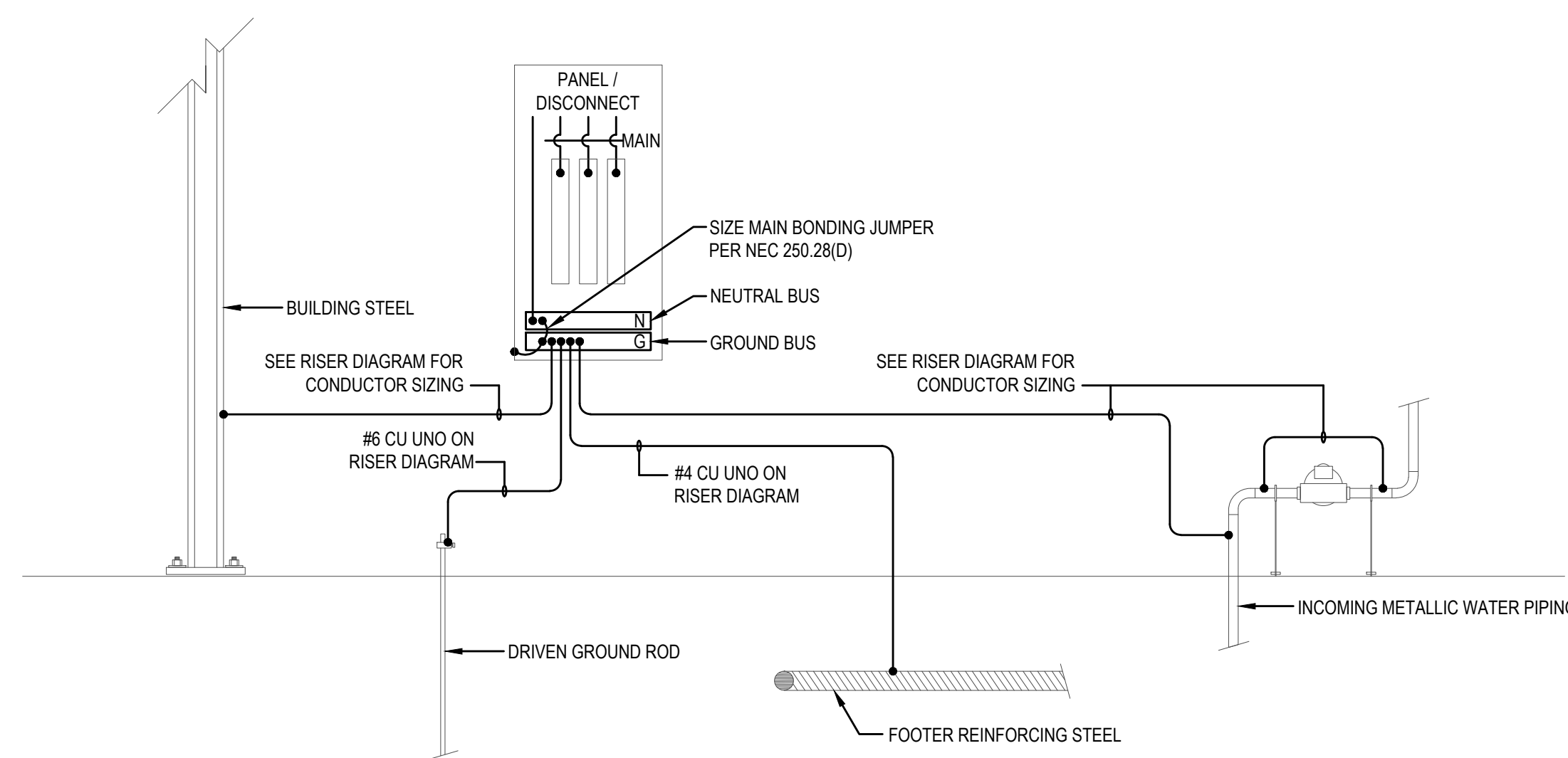
1 | POLE BASE DETAIL - PARKING LOT
E5.3 | NTS



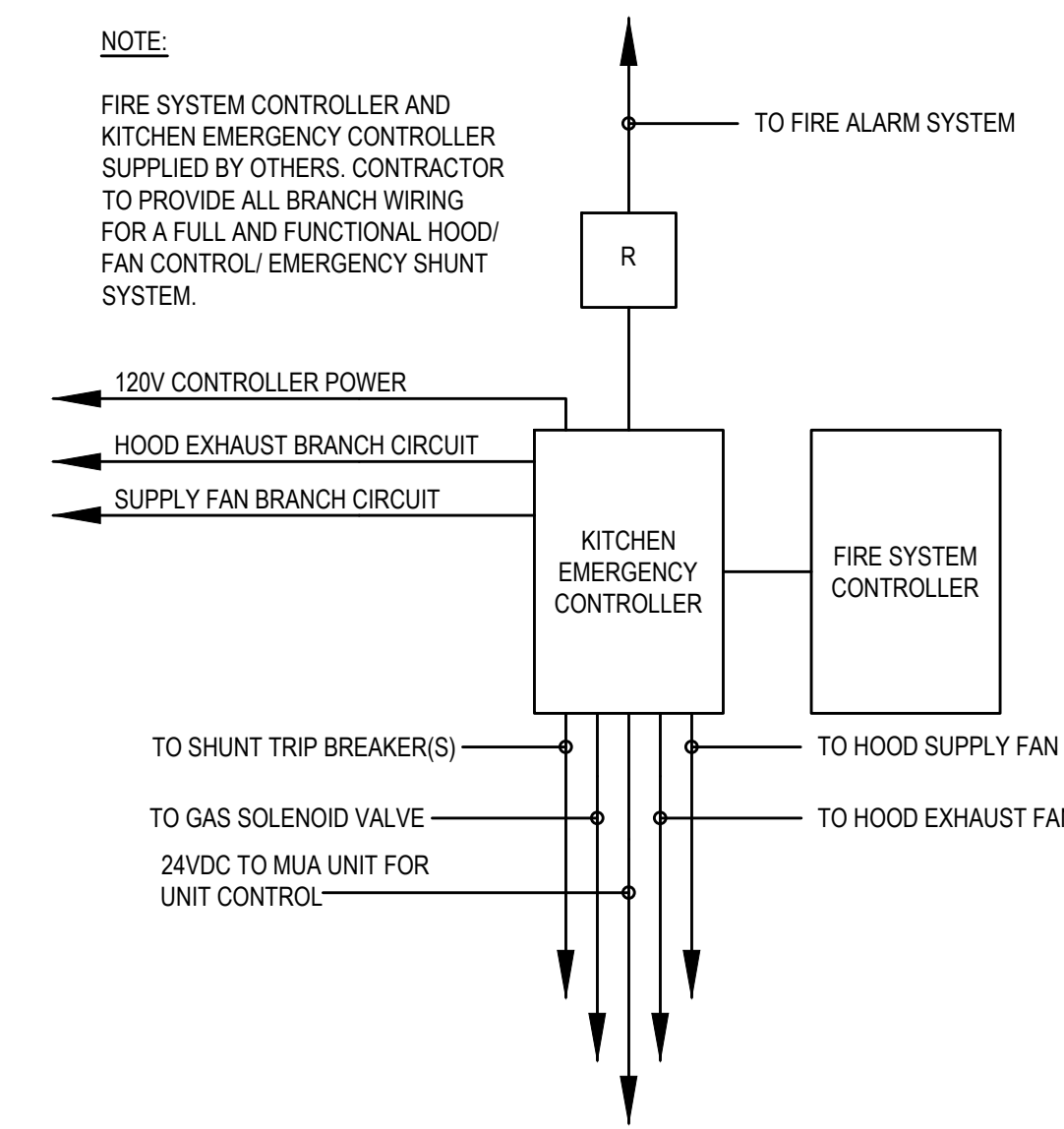
2 | POLE BASE DETAIL - SIDEWALK
E5.3 | NTS



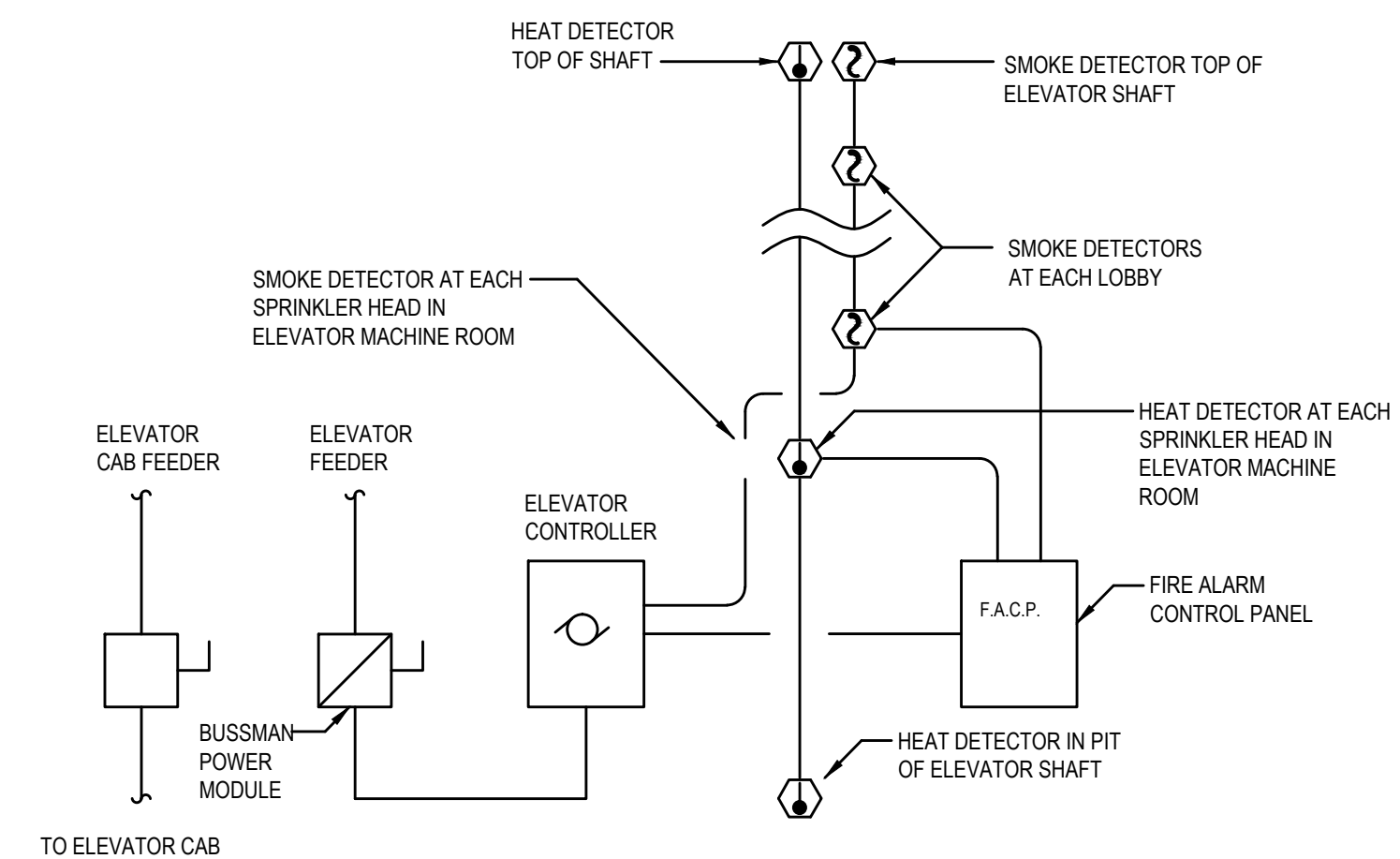
3 | SPD INSTALLATION DETAIL
E5.3 | NTS



4 | GROUNDING ELECTRODE SYSTEM AT SERVICE MAIN DETAIL
E5.3 | NTS



5 | KITCHEN CONTROLLER DETAIL
E5.3 | NTS



NOTES:

1. WIRING IS TYPICAL FOR EACH ELEVATOR.
2. COORDINATE OPERATION OF ELEVATOR WITH AUTHORITY HAVING JURISDICTION FOR USE AS A MEANS OF EGRESS.
3. EACH SMOKE DETECTOR SHALL HAVE A CONTACT CONNECTED TO EACH ELEVATOR CONTROLLER IN THE BANK OF ELEVATORS.
4. HEAT DETECTORS SHALL HAVE AUXILIARY CONTACT TO SHUNT TRIP ELEVATOR CONTROLLER POWER UPON ACTIVATION.

6 | ELEVATOR CONTROL SCHEMATIC
E5.3 | NTS

CONTRACTOR NOTE

IT IS THE RESPONSIBILITY OF THE CONTRACTOR TO NOTIFY THE ARCHITECT, LANDLORD AND TENANT OF ANY DISCREPANCIES ENCOUNTERED ON THE PLANS OR IN EXISTING SITE CONDITIONS PRIOR TO SUBMISSION OF BID. BIDDERS ARE TO VISIT THE SITE AND FAMILIARIZE THEMSELVES WITH EXISTING CONDITIONS AND SATISFY THEMSELVES AS TO THE NATURE AND SCOPE OF THE WORK. THE BASE BID SHALL REFLECT MODIFICATIONS TO SYSTEMS AND DEVICES AS REQUIRED BY STATE, LOCAL AND FEDERAL CODES WHETHER INDICATED OR NOT ON CONTRACT DOCUMENTS. THE SUBMISSIONS OF A BID WILL BE EVIDENCE THAT SUCH AN EXAMINATION AND COMPLIANCE WITH GOVERNING CODES/REQUIREMENTS HAS BEEN MADE. LATER CLAIMS FOR LABOR, EQUIPMENT, OR MATERIALS REQUIRED, OR FOR DIFFICULTIES ENCOUNTERED WHICH COULD HAVE BEEN FORESEEN HAD AN EXAMINATION AND CODE/REQUIREMENTS REVIEW BEEN MADE, WILL NOT BE ALLOWED.