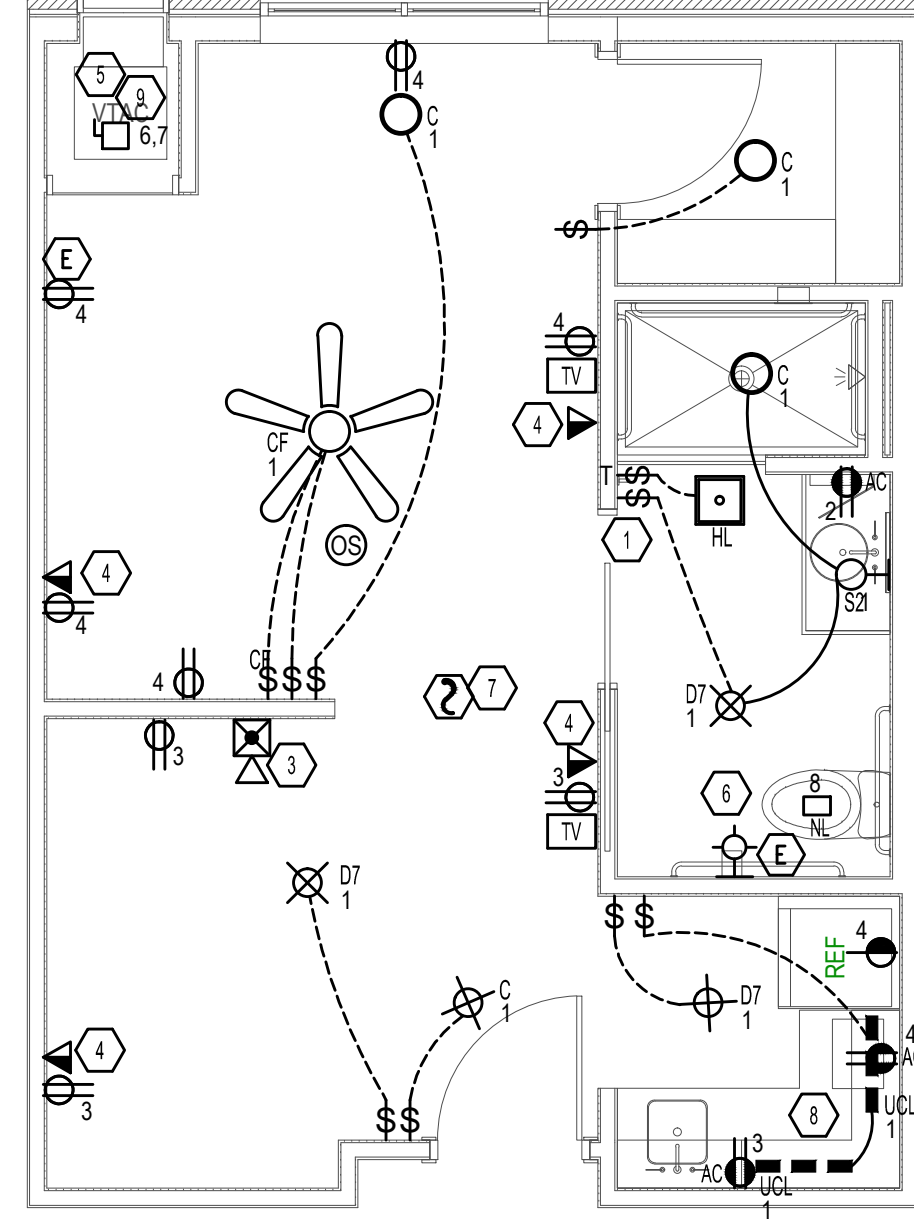
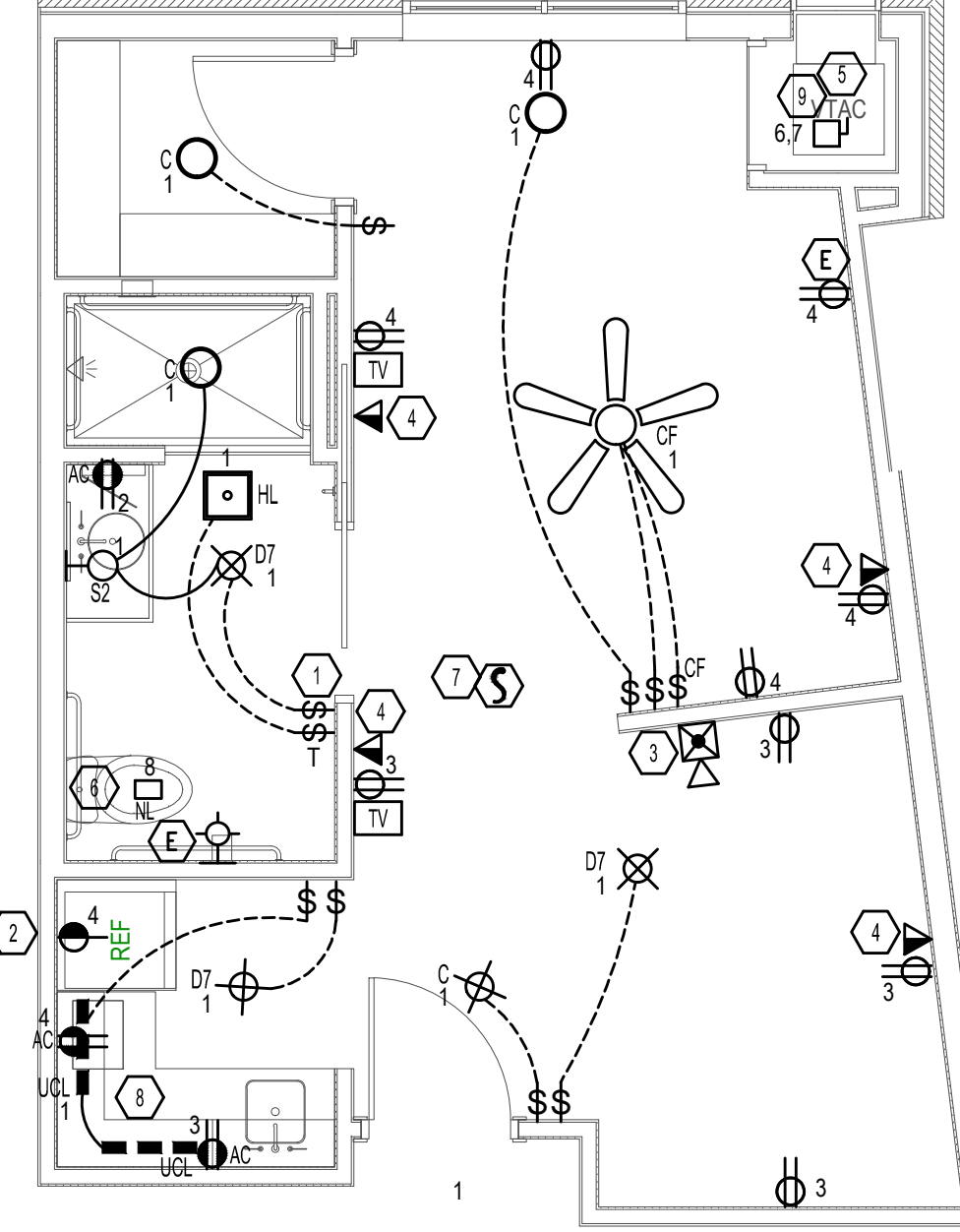


AL 1 BEDROOM A1.1 - 436 SQ. FT.
 CKT 1 - LIGHTING -
 CKT 2 - BATH REC - 180W
 CKT 3 - REC - 900W
 CKT 4 - REC 900W
 CKT 5 - FRIG. REC - 1160W
 CKT 6.7 - VTAC -
 CKT 8 - NIGHT LIGHT - 5W



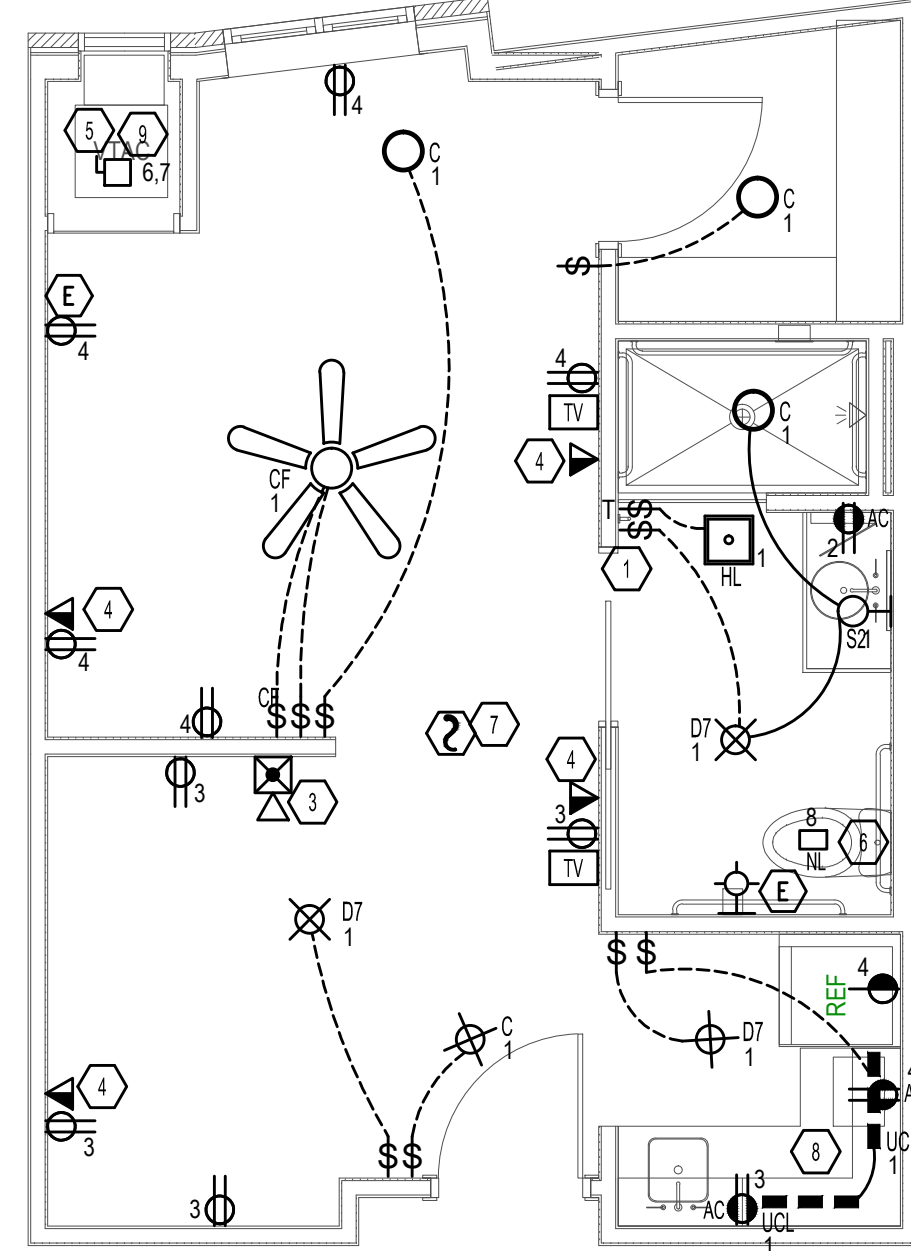
1 | AL STUDIO UNIT A1.1
 E4.1 | 1/4" = 1'-0"

AL 1 BEDROOM A1.2 - 436 SQ. FT.
 CKT 1 - LIGHTING -
 CKT 2 - BATH REC - 180W
 CKT 3 - REC - 900W
 CKT 4 - REC 900W
 CKT 5 - FRIG. REC - 1160W
 CKT 6.7 - VTAC -
 CKT 8 - NIGHT LIGHT - 5W



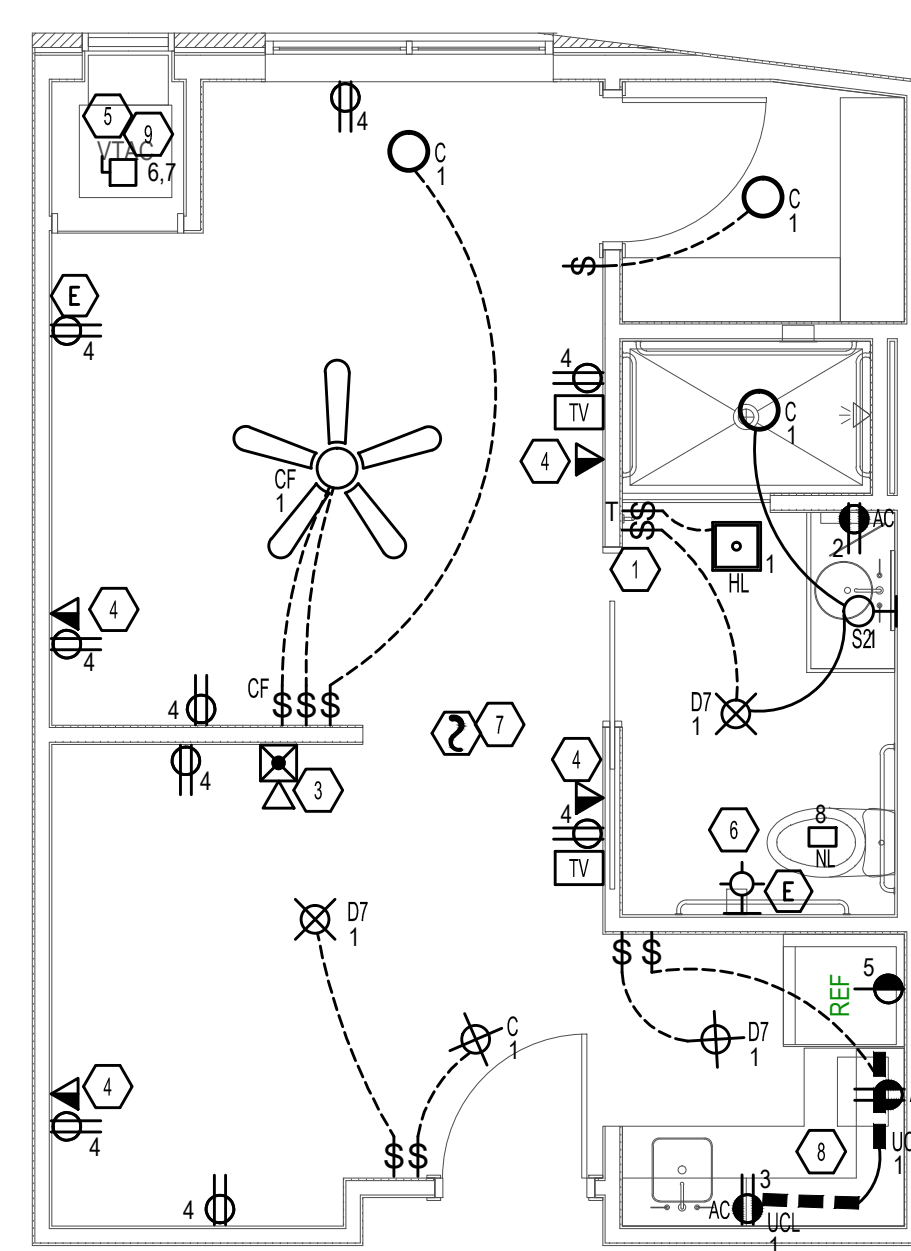
1 | AL STUDIO UNIT A1.2
 E4.1 | 1/4" = 1'-0"

AL 1 BEDROOM A1.3 - 436 SQ. FT.
 CKT 1 - LIGHTING -
 CKT 2 - BATH REC - 180W
 CKT 3 - REC - 900W
 CKT 4 - REC 900W
 CKT 5 - FRIG. REC - 1160W
 CKT 6.7 - VTAC -
 CKT 8 - NIGHT LIGHT - 5W



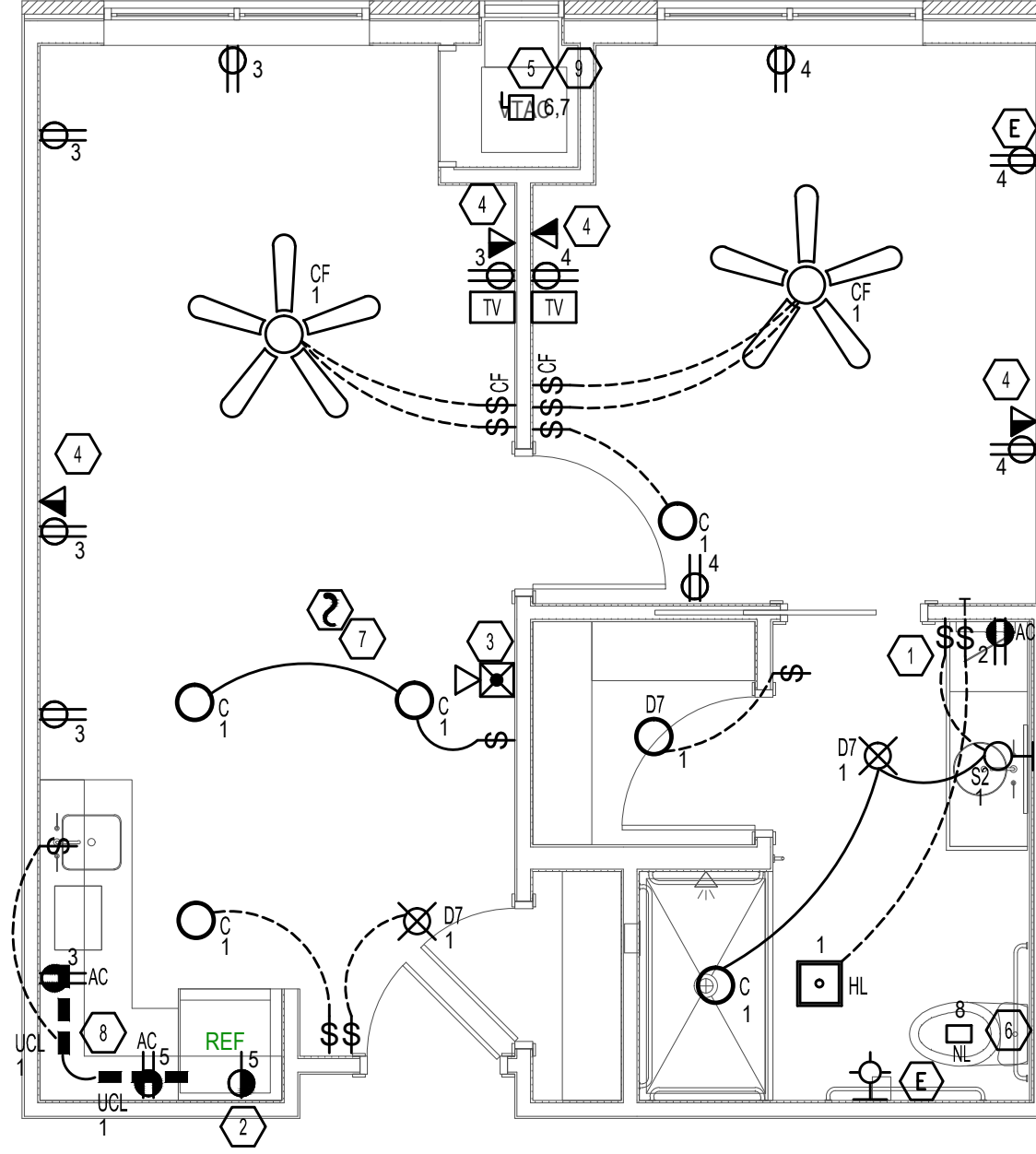
1 | AL STUDIO UNIT A1.3
 E4.1 | 1/4" = 1'-0"

AL 1 BEDROOM A1.4 - 436 SQ. FT.
 CKT 1 - LIGHTING -
 CKT 2 - BATH REC - 180W
 CKT 3 - REC - 900W
 CKT 4 - REC 900W
 CKT 5 - FRIG. REC - 1160W
 CKT 6.7 - VTAC -
 CKT 8 - NIGHT LIGHT - 5W



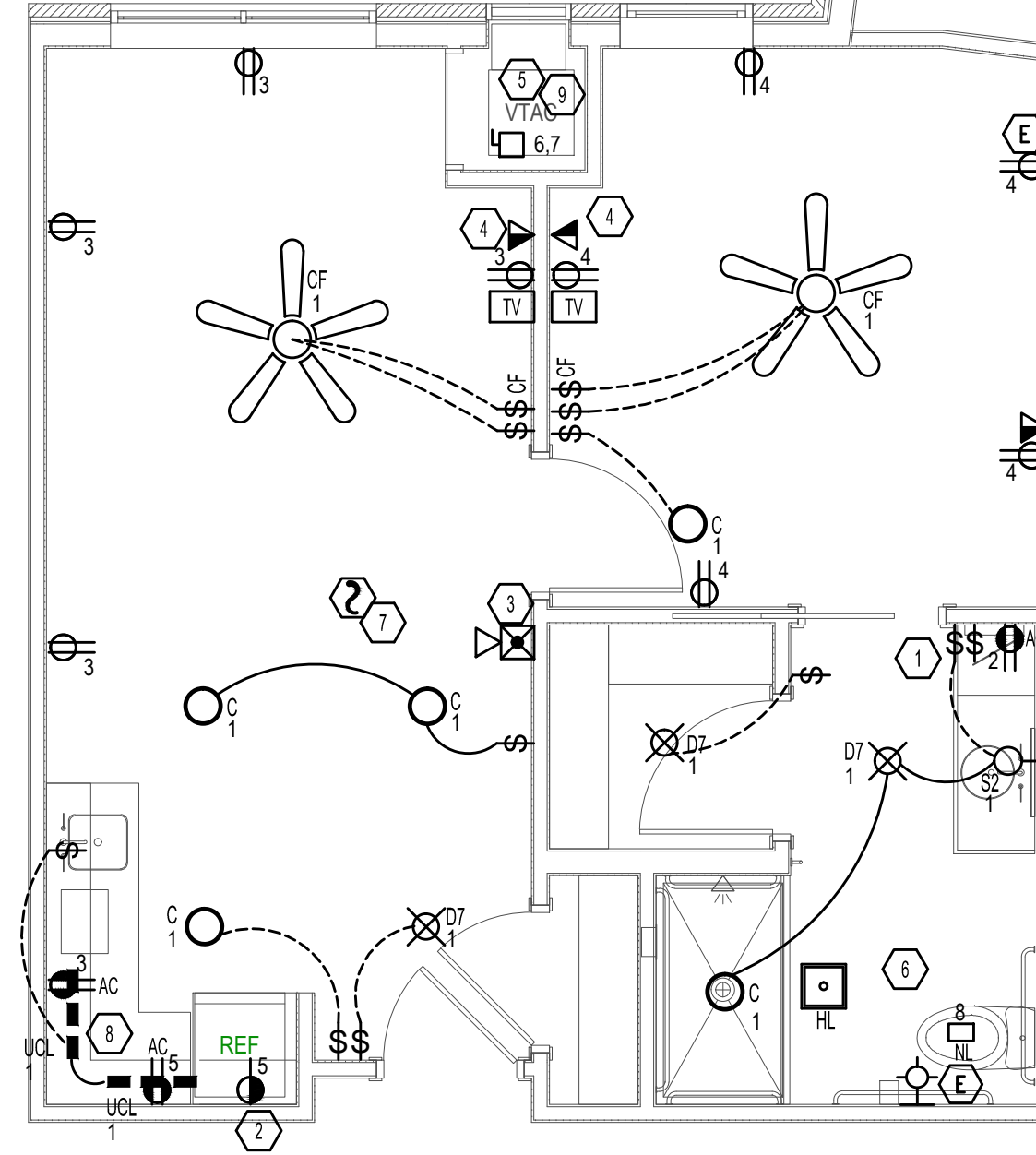
1 | AL STUDIO UNIT A1.4
 E4.1 | 1/4" = 1'-0"

AL 1 BEDROOM B1.1, B1.2 - 603 SQ. FT.
 CKT 1 - LIGHTING -
 CKT 2 - BATH REC - 180W
 CKT 3 - REC - 1080W
 CKT 4 - REC 720W
 CKT 5 - FRIG. REC - 1160W
 CKT 6.7 - VTAC -
 CKT 8 - NIGHT LIGHT - 5W



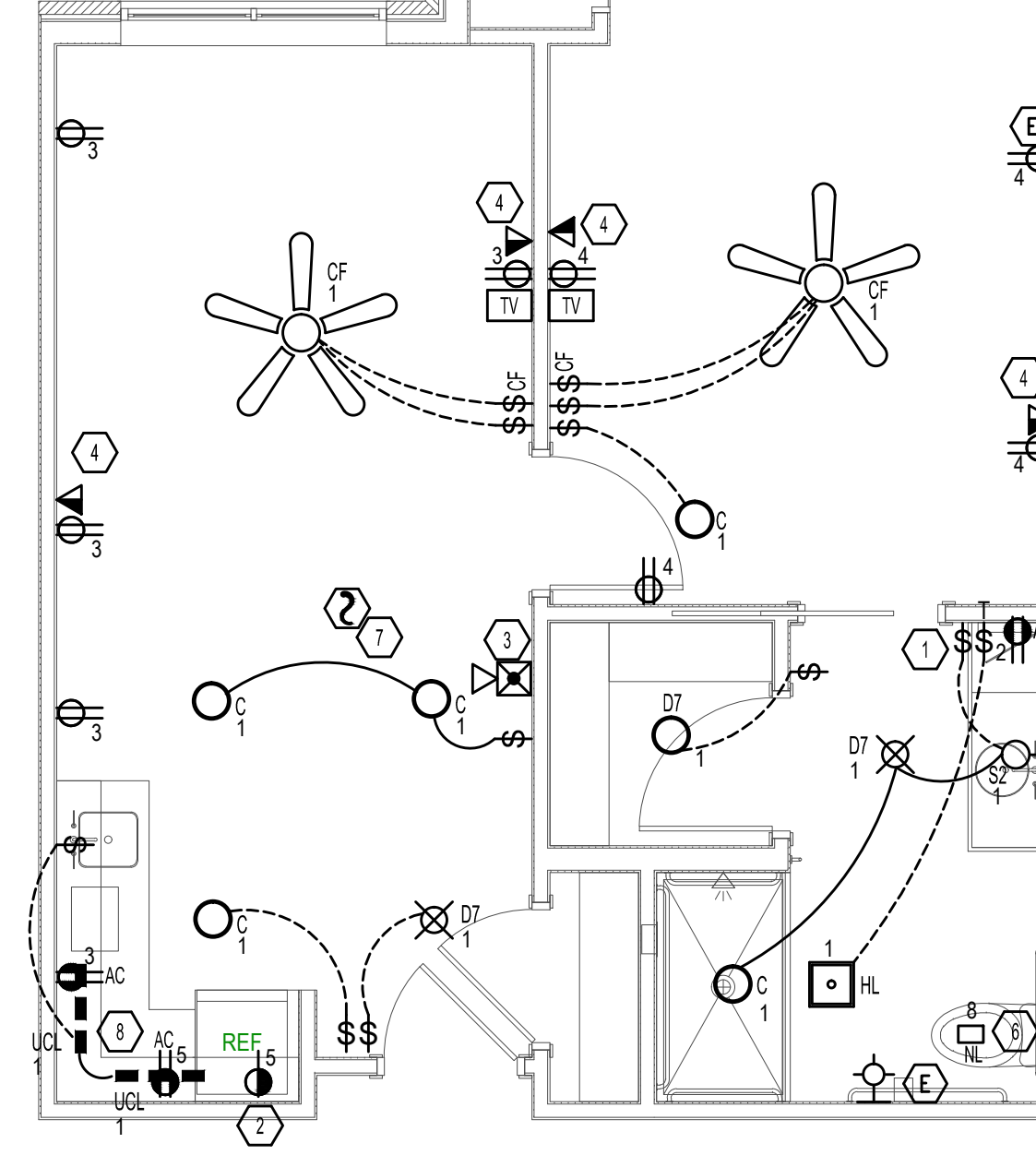
1 | AL STUDIO UNIT B1.1, B1.2
 E4.1 | 1/4" = 1'-0"

AL 1 BEDROOM B1.3 - 552 SQ. FT.
 CKT 1 - LIGHTING -
 CKT 2 - BATH REC - 180W
 CKT 3 - REC - 1080W
 CKT 4 - REC 720W
 CKT 5 - FRIG. REC - 1160W
 CKT 6.7 - VTAC -
 CKT 8 - NIGHT LIGHT - 5W



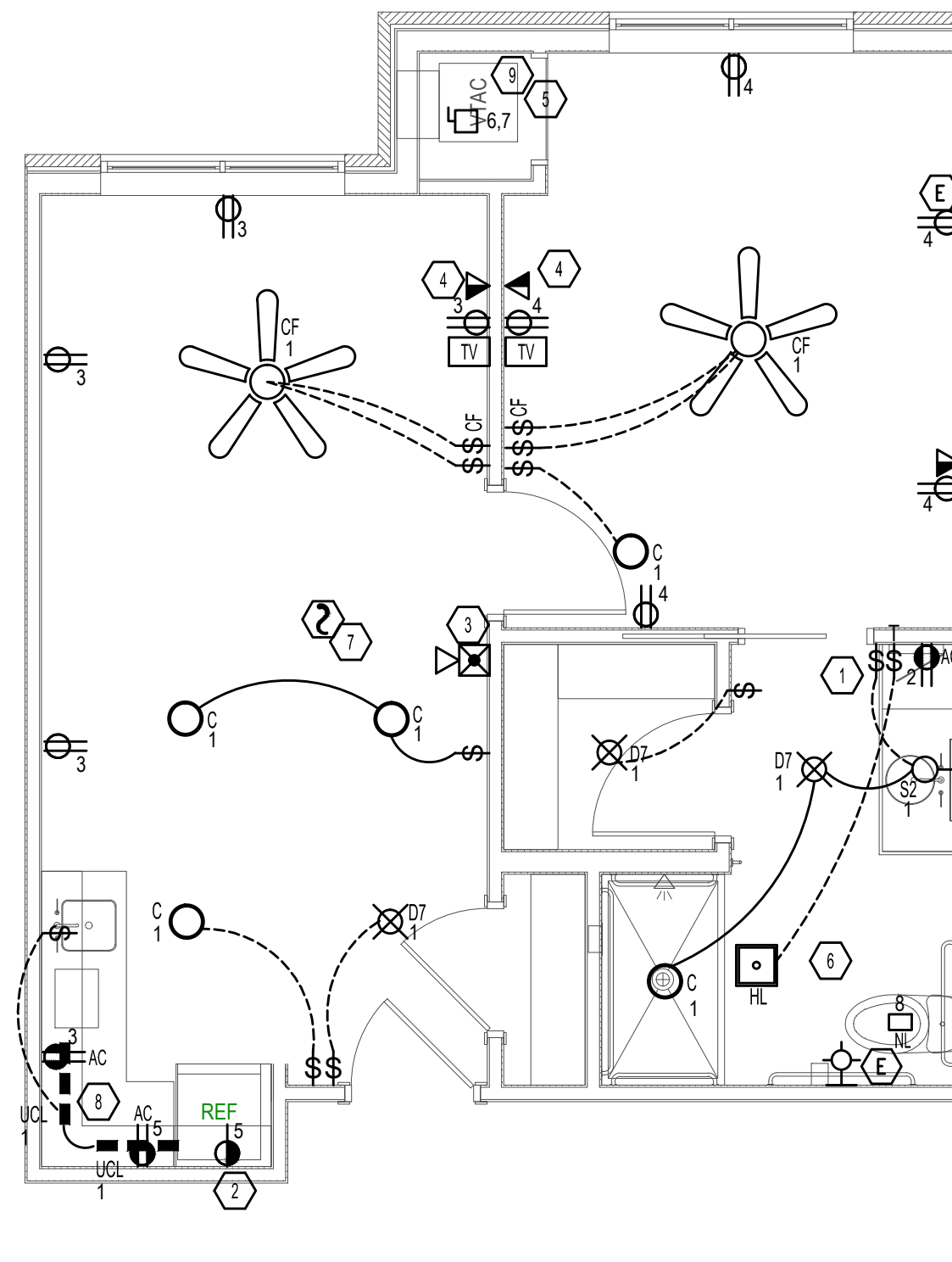
1 | AL STUDIO UNIT B1.3
 E4.1 | 1/4" = 1'-0"

AL 1 BEDROOM B2.1 - 603 SQ. FT.
 CKT 1 - LIGHTING -
 CKT 2 - BATH REC - 180W
 CKT 3 - REC - 1080W
 CKT 4 - REC 720W
 CKT 5 - FRIG. REC - 1160W
 CKT 6.7 - VTAC -
 CKT 8 - NIGHT LIGHT - 5W



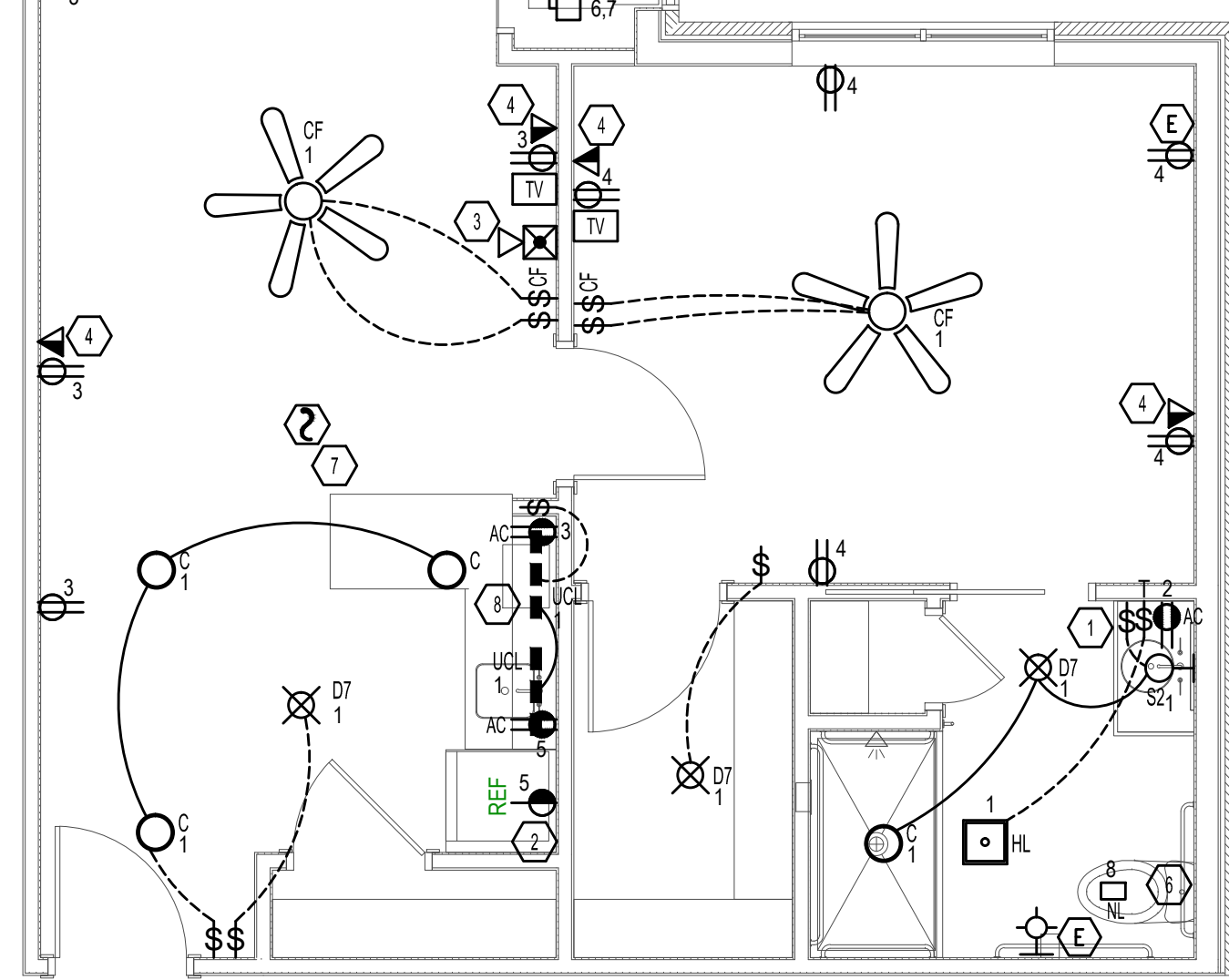
1 | AL STUDIO UNIT B2.1
 E4.1 | 1/4" = 1'-0"

AL 1 BEDROOM B2.2 - 552 SQ. FT.
 CKT 1 - LIGHTING -
 CKT 2 - BATH REC - 180W
 CKT 3 - REC - 1080W
 CKT 4 - REC 720W
 CKT 5 - FRIG. REC - 1160W
 CKT 6.7 - VTAC -
 CKT 8 - NIGHT LIGHT - 5W



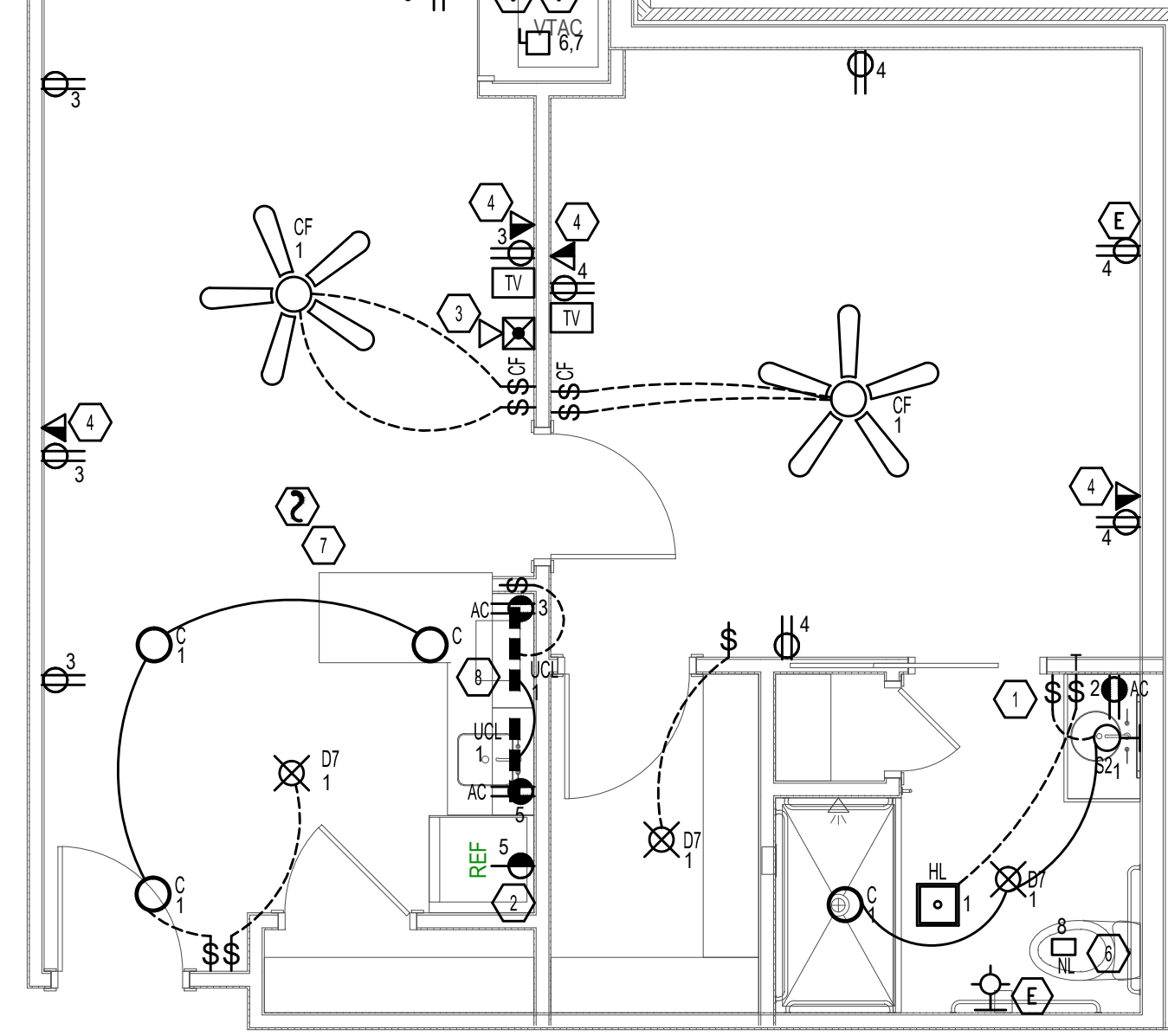
1 | AL STUDIO UNIT B2.2
 E4.1 | 1/4" = 1'-0"

AL 1 BEDROOM C1.1 - 658 SQ. FT.
 CKT 1 - LIGHTING -
 CKT 2 - BATH REC - 180W
 CKT 3 - REC - 1260W
 CKT 4 - REC 720W
 CKT 5 - FRIG. REC - 1160W
 CKT 6.7 - VTAC -
 CKT 8 - NIGHT LIGHT - 5W



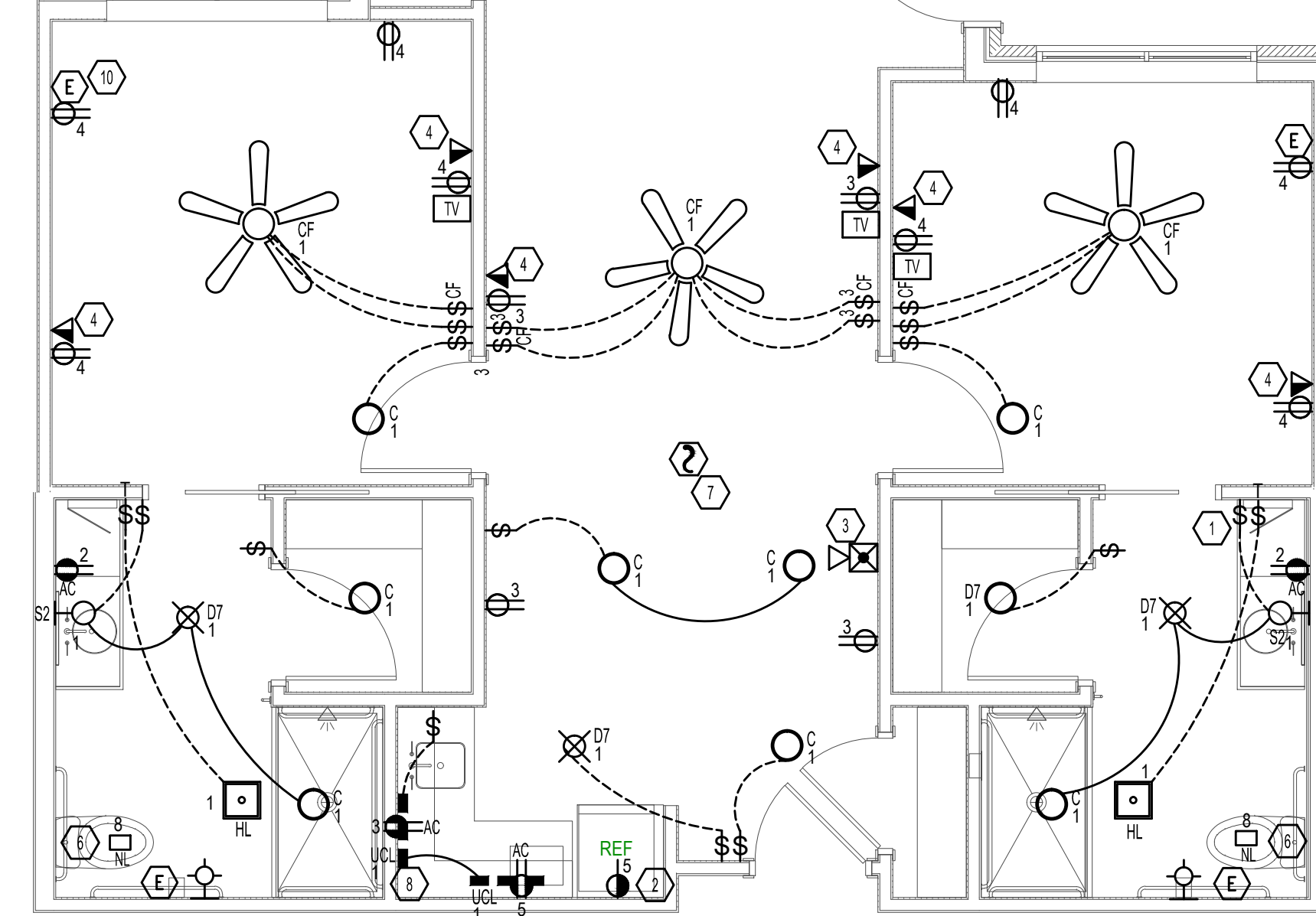
1 | AL STUDIO UNIT C1.1
 E4.1 | 1/4" = 1'-0"

AL 1 BEDROOM C1.2 - 658 SQ. FT.
 CKT 1 - LIGHTING -
 CKT 2 - BATH REC - 180W
 CKT 3 - REC - 1260W
 CKT 4 - REC 720W
 CKT 5 - FRIG. REC - 1160W
 CKT 6.7 - VTAC -
 CKT 8 - NIGHT LIGHT - 5W



1 | AL STUDIO UNIT C1.2
 E4.1 | 1/4" = 1'-0"

AL 2 BEDROOM D1.1, D1.2 - 876 SQ. FT.
 CKT 1 - LIGHTING -
 CKT 2 - BATH REC - 360W
 CKT 3 - REC - 1260W
 CKT 4 - REC 1440W
 CKT 5 - FRIG. REC - 1160W
 CKT 6.7 - VTAC -
 CKT 8 - NIGHT LIGHT - 5W



1 | AL STUDIO UNIT D1.1, D1.2
 E4.1 | 1/4" = 1'-0"

GENERAL NOTES:

- A. ALL WORK SHALL MEET OR EXCEED THE MOST CURRENT EDITION OF THE NATIONAL ELECTRICAL CODE, STATE CODE(S) AND LOCAL CODE(S).
- B. WHEN CONFLICTS OCCUR BETWEEN THE PLANS AND OR SPECS WITH ANY LOCAL CODES, THE MOST STRINGENT REQUIREMENTS APPLY.
- C. SEE MAIN ELECTRICAL GENERAL NOTES, SYMBOL LEGEND, LUMINAIRE SCHEDULE, LINE TYPE LEGEND, AND ELECTRICAL NOTATIONS ON THE ELECTRICAL COVER SHEET FOR MORE INFORMATION.
- D. VERIFY EXACT LOCATIONS AND MOUNTING HEIGHTS FOR ALL FIXTURES AND DEVICES PRIOR TO ROUGH-IN.
- E. ELECTRICAL CONTRACTOR SHALL COORDINATE THE COLOR OF ALL SWITCHES, RECEPTACLES, ETC. AND COVER PLATES WITH ARCHITECT, OWNER, COMMUNICATIONS CONTRACTOR, AND INTERIOR DESIGNER.
- F. COORDINATE ALL WORK WITH OTHER TRADES PRIOR TO ROUGH-IN.
- G. IN ALL AREAS SPECIFIED IN NEC 210.52, ALL 15 AND 20 AMP, 120 VOLT RECEPTACLES SHALL BE LISTED TAMPER-RESISTANT RECEPTACLES.
- H. ELECTRICAL CONTRACTOR SHALL PROVIDE SAFETY SWITCHES FOR ALL HVAC AND PLUMBING EQUIPMENT IN ACCORDANCE WITH THE NATIONAL ELECTRICAL CODE.
- I. DEVICES INSTALLED IN FIRE SEPARATION WALLS/CEILINGS SHALL BE INSTALLED IN ACCORDANCE WITH THE LISTING AND LABELING OF THE RATED ASSEMBLY. DO NOT INSTALL OUTLET BOXES WITHIN THE SAME STUD SPACE.
- J. LIGHT FIXTURES INSTALLED IN CLOSETS SHALL CONFORM TO NEC ARTICLE 410.16.
- K. ALL PRODUCTS USED FOR FIRE-STOP SYSTEMS SHALL BE RATED FOR COMMERCIAL CONSTRUCTION.
- L. UNLESS NOTED OTHERWISE ALL RECEPTACLES SHALL BE MOUNTED 18" AFF.
- M. ALL FIXTURES MARKED 'AC' SHALL BE MOUNTED 142" AFF UNLESS SPECIFICALLY NOTED OTHERWISE.
- N. PROVIDE CAT/TELEPHONE/DATA BACK BOX 18" AFF, ROUGH-IN ONLY, UNLESS NOTED OTHERWISE.
- O. CABLE TV (COAXIAL CABLE) IN EACH UNIT SHALL BE INSTALLED BY THE EC WITH FINISH PLATES. CABLE SERVICE CONDUCTORS SHALL BE PROVIDED BY THE UTILITY COMPANY.
- P. TELEPHONE WIRING (CAT 5) IN EACH UNIT SHALL BE INSTALLED BY THE EC WITH FINISH PLATES. TELEPHONE SERVICE CONDUCTORS SHALL BE PROVIDED BY UTILITY COMPANY.
- Q. THE NUMBER SHOWN NEXT TO EACH DEVICE/FIXTURE REPRESENTS A CIRCUIT. SEE OVERALL POWER PLANS AND PANEL SCHEDULES FOR ALL UNIT CIRCUITRY.

PLAN NOTES:

1. PROVIDE OCCUPANCY SWITCH IN MEMORY CARE RESTROOMS.
2. SLAVE REFRIGERATOR RECEPTACLE OFF OF COUNTERTOP RECEPTACLE TO PROVIDE GFCI PROTECTION FOR REFRIGERATOR.
3. BUILDING FIRE ALARM SYSTEM ALARM INDICATION WITH VISUAL ALARM HORN STROBE DEVICE - 80" DEVICE SHALL BE MOUNTED WITHIN 18" OF NEAREST WALL CORNER.
4. PROVIDE AND INSTALL WIRING TO REQUIRED LOCATION BASED ON SYMBOL: (1) CAT 5; FOR TELEPHONE, (1) CAT6 FOR DATA, (1) RG6 COAXIAL CABLE FOR TELEVISION.
5. PROVIDE ELECTRICAL CONNECTION AND SAFETY SWITCH FOR MECHANICAL EQUIPMENT. VERIFY EXACT REQUIREMENTS WITH MANUFACTURERS NAMEPLATE. COORDINATE EXACT LOCATION WITH MECHANICAL CONTRACTOR PRIOR TO ROUGH-IN. LOCATE PLUG FOR PTAC UNIT BESIDE UNIT (IF APPLICABLE).
6. VERIFY EXACT LOCATIONS OF BATHROOM EXHAUST FANS WITH MECHANICAL DRAWINGS.
7. LOCATE CEILING MOUNTED SMOKE DETECTORS PER THE LATEST NFPA 72 GUIDELINES AND THE MANUFACTURERS PUBLISHED RECOMMENDATIONS FOR THE SPECIFIC TYPE OF DETECTOR. MAINTAIN 4 INCHES TO THE EDGE OF THE DETECTOR FROM THE CLOSEST VERTICAL SURFACE (TYPICAL OF ALL).
8. CONTRACTOR SHALL PROVIDE UNDERCABINET LIGHTING AND FIELD COORDINATE EXACT LENGTH SO THAT THERE IS MINIMUM 17W PER 2' SECTION. CONTRACTOR SHALL VERIFY WITH A LIGHT METER THAT THE ILLUMINATION LEVEL IS A MINIMUM OF 50 FOOT-CANDELES THROUGHOUT THE COUNTERTOP SURFACES AND ADD ADDITIONAL UNDERCABINET LIGHTING IF NECESSARY.
9. SEE ELECTRICAL SHEETS, 'E2' SERIES, FOR MECHANICAL AND POWER CIRCUITING INFORMATION.

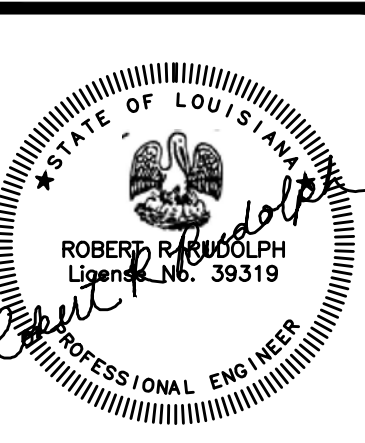
CONTRACTOR NOTE:

IT IS THE RESPONSIBILITY OF THE CONTRACTOR TO NOTIFY THE ARCHITECT, LANDLORD AND TENANT OF ANY DISCREPANCIES ENCOUNTERED ON THE PLANS OR IN EXISTING SITE CONDITIONS PRIOR TO SUBMISSION OF BID. BIDDERS ARE TO VISIT THE SITE AND FAMILIARIZE THEMSELVES WITH EXISTING CONDITIONS AND SATISFY THEMSELVES AS TO THE NATURE AND SCOPE OF THE WORK. THE BASE BID SHALL REFLECT MODIFICATIONS TO SYSTEMS AND DEVICES AS REQUIRED BY STATE, LOCAL AND FEDERAL CODES WHETHER INDICATED OR NOT ON CONTRACT DOCUMENTS. THE SUBMISSIONS OF A BID WILL BE EVIDENCE THAT SUCH AN EXAMINATION AND COMPLIANCE WITH GOVERNING CODES/REQUIREMENTS HAS BEEN MADE. LATER CLAIMS FOR LABOR, EQUIPMENT, OR MATERIALS REQUIRED, OR FOR DIFFICULTIES ENCOUNTERED WHICH COULD HAVE BEEN FORESEEN HAD AN EXAMINATION AND CODE/REQUIREMENTS REVIEW BEEN MADE, WILL NOT BE ALLOWED.

pi architects
 3500 Jefferson St. Suite 303
 Austin, TX 78731
 P: (512) 231-1910
 F: (512) 231-1950

www.piarch.com
 architecture + master
 interior planning
 landscape architecture
 PE SERVICE, INC.
 REGISTERED PROFESSIONAL ENGINEER
 LICENSE NO. 39319

These plans have been properly examined by the undersigned. I have determined that they comply with existing local Louisiana codes, and have been properly site adapted to use in this area.



WATERSTONE AT BATON ROUGE
 ASSISTED LIVING & MEMORY CARE

SIEGEN LANE
 BATON ROUGE, LA 70810

ISSUE: PERMIT SET

©2015 PI ARCHITECTS, INC.

REVISIONS:

DATE: 03/31/2016
 PROJECT NUMBER: PES 15090
 SHEET TITLE: ENLARGED UNIT PLANS

SHEET: E4.1