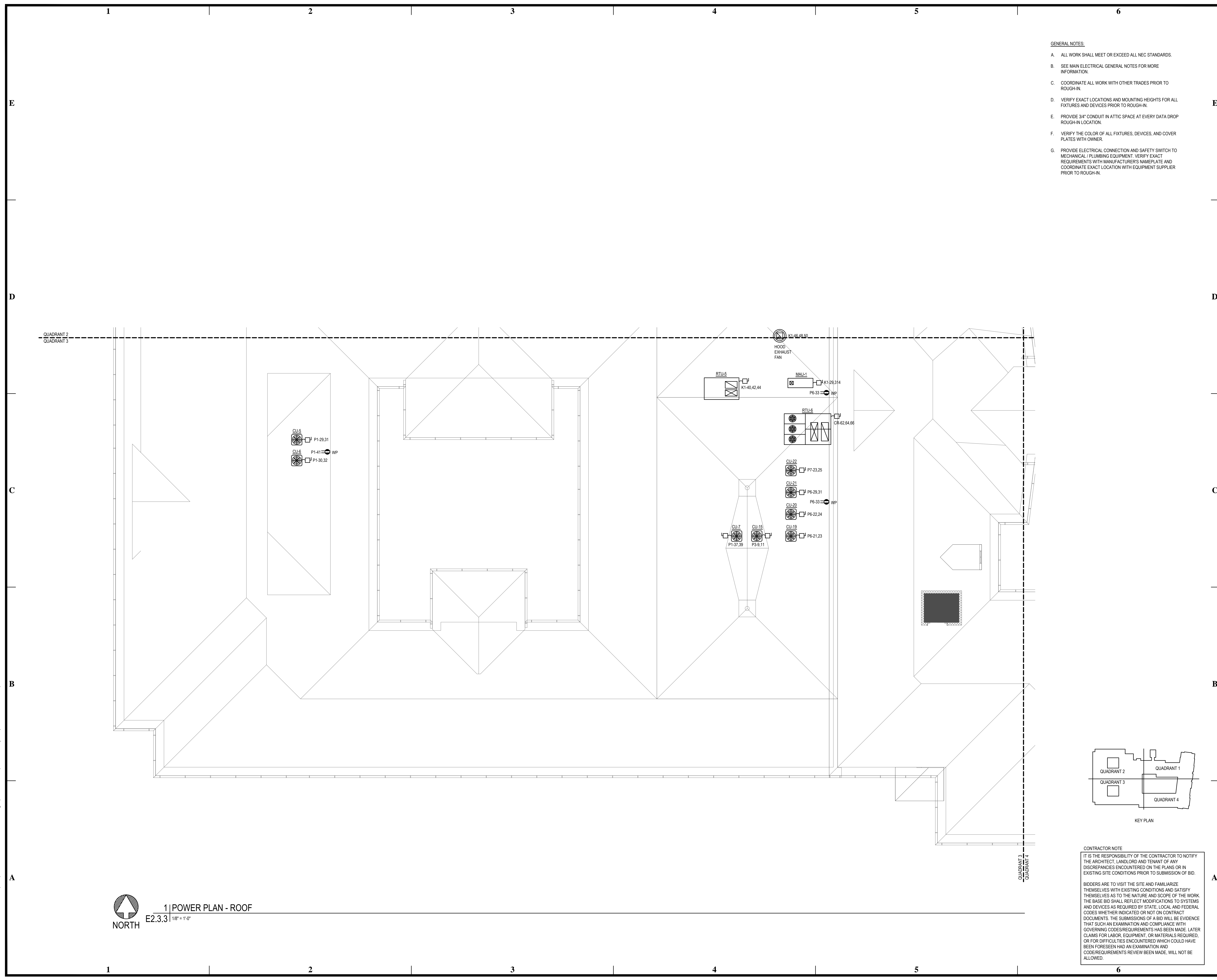
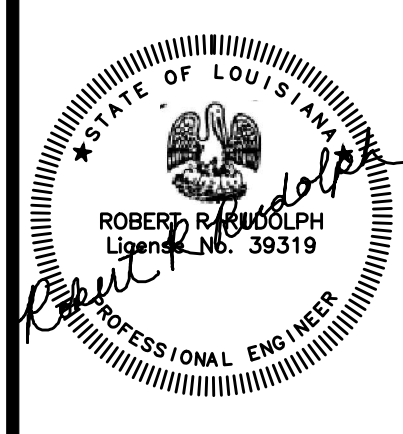


BIM Server: Save/2012 - BIM Server (18.0)/14017 Concordia Baton Rouge | Ver: 18.001 | Wednesday, September 02, 2015 | 4:04 PM



- GENERAL NOTES:**
- A. ALL WORK SHALL MEET OR EXCEED ALL NEC STANDARDS.
 - B. SEE MAIN ELECTRICAL GENERAL NOTES FOR MORE INFORMATION.
 - C. COORDINATE ALL WORK WITH OTHER TRADES PRIOR TO ROUGH-IN.
 - D. VERIFY EXACT LOCATIONS AND MOUNTING HEIGHTS FOR ALL FIXTURES AND DEVICES PRIOR TO ROUGH-IN.
 - E. PROVIDE 3/4" CONDUIT IN ATTIC SPACE AT EVERY DATA DROP ROUGH-IN LOCATION.
 - F. VERIFY THE COLOR OF ALL FIXTURES, DEVICES, AND COVER PLATES WITH OWNER.
 - G. PROVIDE ELECTRICAL CONNECTION AND SAFETY SWITCH TO MECHANICAL / PLUMBING EQUIPMENT. VERIFY EXACT REQUIREMENTS WITH MANUFACTURER'S NAMEPLATE AND COORDINATE EXACT LOCATION WITH EQUIPMENT SUPPLIER PRIOR TO ROUGH-IN.

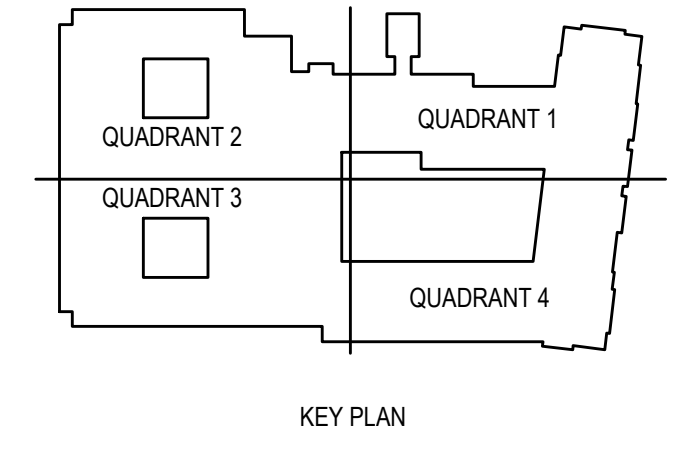
pi architects
 3500 Jefferson St. Suite 303
 Austin, TX 78731
 P: (512) 231-1910
 F: (512) 231-1950
 www.piarch.com
 architecture + master
 interior + landscape
 architecture
PE Services
 ENGINEERS FOR THE SOUTH
 www.pe-services.com



**WATERSTONE AT BATON ROUGE
 ASSISTED LIVING & MEMORY CARE**
 SIEGEN LANE
 BATON ROUGE, LA 70810

ISSUE: PERMIT SET

©2015 PI ARCHITECTS, INC.
REVISIONS:



CONTRACTOR NOTE
 IT IS THE RESPONSIBILITY OF THE CONTRACTOR TO NOTIFY THE ARCHITECT, LANDLORD AND TENANT OF ANY DISCREPANCIES ENCOUNTERED ON THE PLANS OR IN EXISTING SITE CONDITIONS PRIOR TO SUBMISSION OF BID.
 BIDDERS ARE TO VISIT THE SITE AND FAMILIARIZE THEMSELVES WITH EXISTING CONDITIONS AND SATISFY THEMSELVES AS TO THE NATURE AND SCOPE OF THE WORK. THE BASE BID SHALL REFLECT MODIFICATIONS TO SYSTEMS AND DEVICES AS REQUIRED BY STATE, LOCAL AND FEDERAL CODES WHETHER INDICATED OR NOT ON CONTRACT DOCUMENTS. THE SUBMISSIONS OF A BID WILL BE EVIDENCE THAT SUCH AN EXAMINATION AND COMPLIANCE WITH GOVERNING CODES/REQUIREMENTS HAS BEEN MADE. LATER CLAIMS FOR LABOR, EQUIPMENT, OR MATERIALS REQUIRED, OR FOR DIFFICULTIES ENCOUNTERED WHICH COULD HAVE BEEN FORESEEN HAD AN EXAMINATION AND CODE/REQUIREMENTS REVIEW BEEN MADE, WILL NOT BE ALLOWED.

1 | POWER PLAN - ROOF
 E2.3.3 | 1/8" = 1'-0"

DATE: 03/31/2016
 PROJECT NUMBER: PES 15090
 SHEET TITLE: POWER PLAN - ROOF
 SHEET: **E2.3.3**