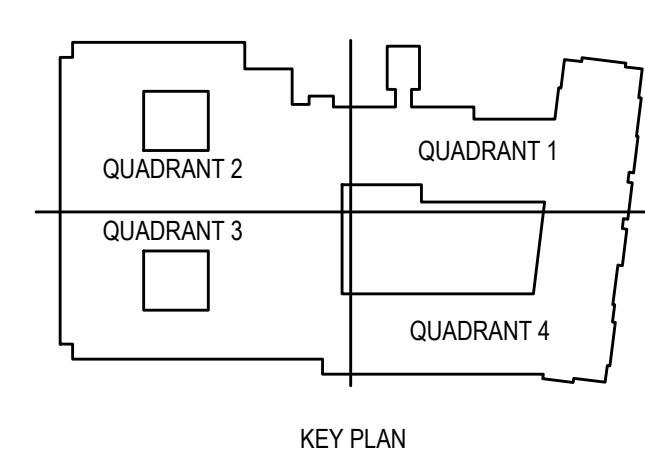
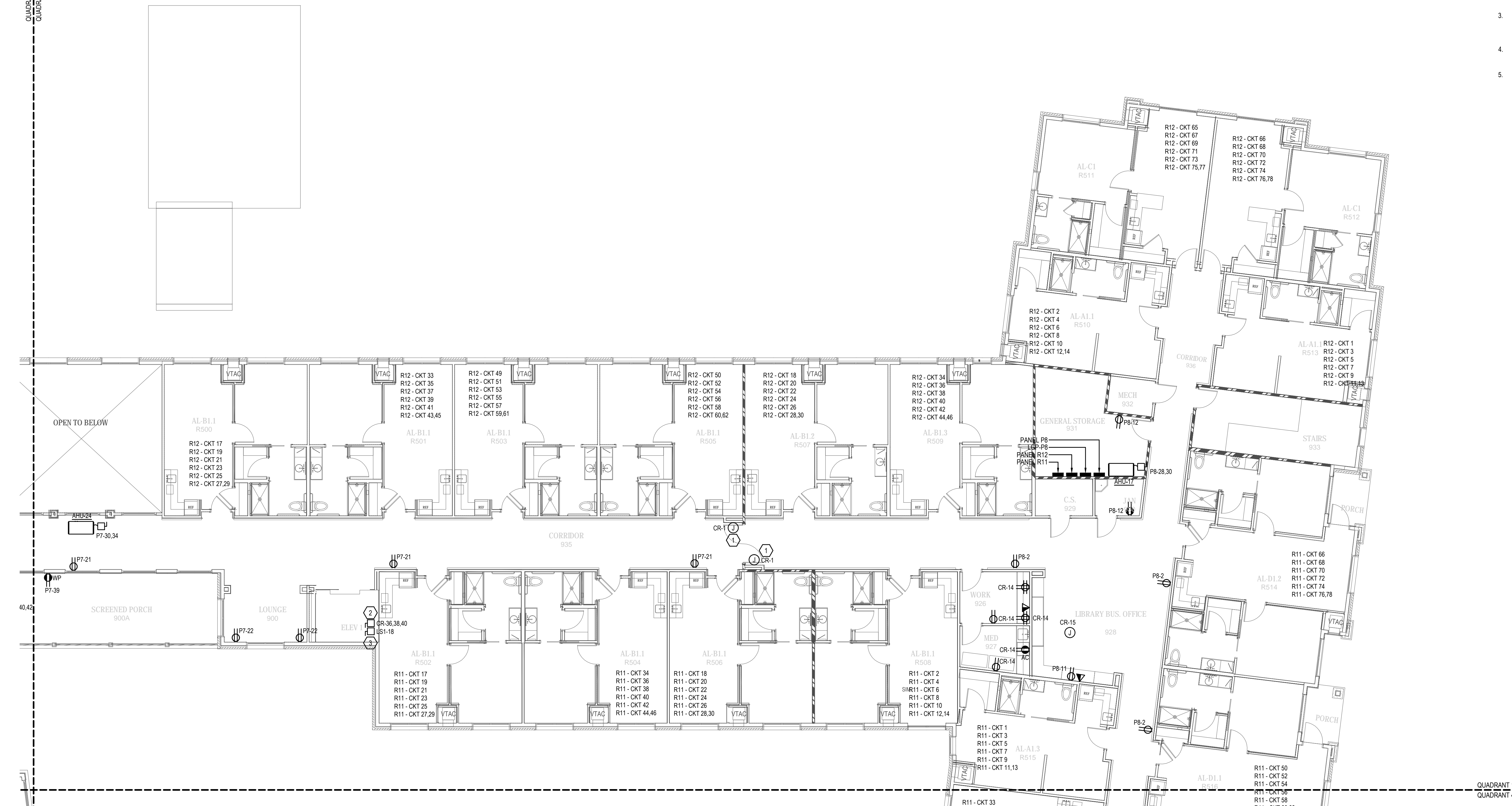


CONCRETE
SUBSLAB



- GENERAL NOTES:
- ALL WORK SHALL MEET OR EXCEED ALL NEC STANDARDS.
 - SEE MAIN ELECTRICAL GENERAL NOTES FOR MORE INFORMATION.
 - COORDINATE ALL WORK WITH OTHER TRADES PRIOR TO ROUGH-IN.
 - VERIFY EXACT LOCATIONS AND MOUNTING HEIGHTS FOR ALL FIXTURES AND DEVICES PRIOR TO ROUGH-IN.
 - PROVIDE 3/4" CONDUIT IN ATTIC SPACE AT EVERY DATA DROP ROUGH-IN LOCATION.
 - VERIFY THE COLOR OF ALL FIXTURES, DEVICES AND COVER PLATES WITH OWNER.
 - PROVIDE ELECTRICAL CONNECTION AND SAFETY SWITCH TO MECHANICAL / PLUMBING EQUIPMENT. VERIFY EXACT REQUIREMENTS WITH MANUFACTURER'S NAMEPLATE AND COORDINATE EXACT LOCATION WITH EQUIPMENT SUPPLIER PRIOR TO ROUGH-IN.

- PLAN NOTES:
- PROVIDE JUNCTION BOX WITH 120V CIRCUIT FOR CONNECTION TO MAGNETIC DOOR HOLD-OPEN DEVICES. COORDINATE WITH FIRE ALARM DESIGN. SEE E3 SERIES DRAWINGS FOR MORE INFORMATION.
 - PROVIDE ELECTRICAL CONNECTION AND FUSED DISCONNECT SWITCH FOR ELEVATOR CONTROLLER. PROVIDE MEANS TO SHUNT POWER TO CONTROLLER UPON ACTIVATION OF THE FIRE ALARM SYSTEM. VERIFY ALL ELECTRICAL REQUIREMENTS WITH EQUIPMENT SUPPLIER.
 - PROVIDE ELECTRICAL CONNECTION AND SAFETY SWITCH FOR ELEVATOR CAB LIGHTING AND FANS. VERIFY ALL ELECTRICAL REQUIREMENTS WITH EQUIPMENT SUPPLIER.
 - EXHAUST FAN PROVIDED BY OTHERS, WIRED BY EC. CONNECT TO LIGHTING IN ROOM FOR POWER AND CONTROLS.
 - COORDINATE TELEVISION MOUNTING HEIGHT WITH ARCHITECT PRIOR TO ROUGH-IN.

CONTRACTOR NOTE

IT IS THE RESPONSIBILITY OF THE CONTRACTOR TO NOTIFY THE ARCHITECT, LANDLORD AND TENANT OF ANY DISCREPANCIES ENCOUNTERED ON THE PLANS OR IN EXISTING SITE CONDITIONS PRIOR TO SUBMISSION OF BID.

BIDDERS ARE TO VISIT THE SITE AND FAMILIARIZE THEMSELVES WITH EXISTING CONDITIONS AND SATISFY THEMSELVES AS TO THE NATURE AND SCOPE OF THE WORK. THE BASE BID SHALL REFLECT MODIFICATIONS TO SYSTEMS AND DEVICES AS REQUIRED BY STATE, LOCAL AND FEDERAL CODES WHETHER INDICATED OR NOT ON CONTRACT DOCUMENTS. THE SUBMISSIONS OF A BID WILL BE EVIDENCE THAT SUCH AN EXAMINATION AND COMPLIANCE WITH GOVERNING CODES/REQUIREMENTS HAS BEEN MADE. LATER CLAIMS FOR LABOR, EQUIPMENT, OR MATERIALS REQUIRED, OR FOR DIFFICULTIES ENCOUNTERED WHICH COULD HAVE BEEN FORESEEN HAD AN EXAMINATION AND CODE/REQUIREMENTS REVIEW BEEN MADE, WILL NOT BE ALLOWED.

1 | POWER PLAN - 2ND FLOOR
E2.2.1 | 1/8" = 1'-0"

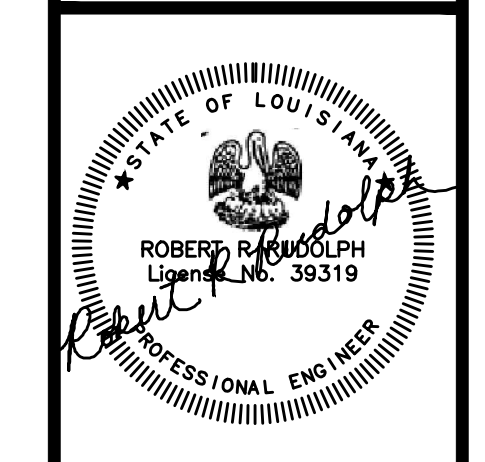


pi architects
3500 Jefferson St. Suite 303
Austin, TX 78731
P: (512) 231-1910
F: (512) 231-1950
www.piarch.com

architecture + master
interior + landscape
architecture

PE SERVICE
ENGINEERS FOR THE STATE
www.pe-service.com

These plans have been properly examined by the undersigned. I have determined that they comply with existing local Louisiana codes, and have been properly site adapted to use in this area.



**WATERSTONE AT BATON ROUGE
ASSISTED LIVING & MEMORY CARE**

SIEGEN LANE
BATON ROUGE, LA 70810

ISSUE: PERMIT SET

©2015 PI ARCHITECTS, INC.
REVISIONS:

DATE: 03/31/2016
PROJECT NUMBER: PES 15090
SHEET TITLE:

POWER PLAN - 2ND FLOOR

SHEET:

E2.2.1

BIM Server: Server2012 - BIM Server (18/01/14)17 Concordia Baton Rouge | Ver: 18.0011 | Wednesday, September 02, 2015 | 4:04 PM