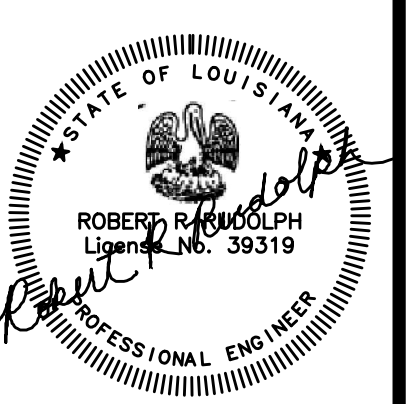


These plans have been properly examined by the undersigned. I have determined that they comply with existing local Louisiana codes, and have been properly adapted to use in this area.



- GENERAL NOTES:**
- ALL WORK SHALL MEET OR EXCEED ALL NEC STANDARDS.
  - SEE MAIN ELECTRICAL GENERAL NOTES FOR MORE INFORMATION.
  - COORDINATE ALL WORK WITH OTHER TRADES PRIOR TO ROUGH-IN.
  - VERIFY EXACT LOCATIONS AND MOUNTING HEIGHTS FOR ALL FIXTURES AND DEVICES PRIOR TO ROUGH-IN.
  - PROVIDE 3/4" CONDUIT IN ATTIC SPACE AT EVERY DATA DROP ROUGH-IN LOCATION.
  - VERIFY THE COLOR OF ALL FIXTURES, DEVICES AND COVER PLATES WITH OWNER.
  - PROVIDE ELECTRICAL CONNECTION AND SAFETY SWITCH TO MECHANICAL / PLUMBING EQUIPMENT. VERIFY EXACT REQUIREMENTS WITH MANUFACTURER'S NAMEPLATE AND COORDINATE EXACT LOCATION WITH EQUIPMENT SUPPLIER PRIOR TO ROUGH-IN.

- PLAN NOTES:**
- PROVIDE JUNCTION BOX WITH 120V CIRCUIT FOR CONNECTION TO MAGNETIC DOOR HOLD-OPEN DEVICES. COORDINATE WITH FIRE ALARM DESIGN. SEE E3 SERIES DRAWINGS FOR MORE INFORMATION.
  - PROVIDE LITHONIA DMW-2-32-MVOLT-GE810IS LUMINAIRE AND GFI SERVICE RECEPTACLE. WALL MOUNT IN ELEVATOR SHAFT AT BOTTOM AND AT TOP PER MANUFACTURER'S RECOMMENDATIONS. LUMINAIRE MUST NOT BE CONNECTED ON LOAD SIDE OF RECEPTACLE.
  - PROVIDE SIMPLEX RECEPTACLE FOR ELEVATOR SUMP PUMP. VERIFY ALL ELECTRICAL REQUIREMENTS AND EXACT LOCATION WITH EQUIPMENT SUPPLIER PRIOR TO ROUGH-IN.
  - EXHAUST FAN PROVIDED BY OTHERS, WIRED BY EC. CONNECT TO LIGHTING IN ROOM FOR POWER AND CONTROLS.

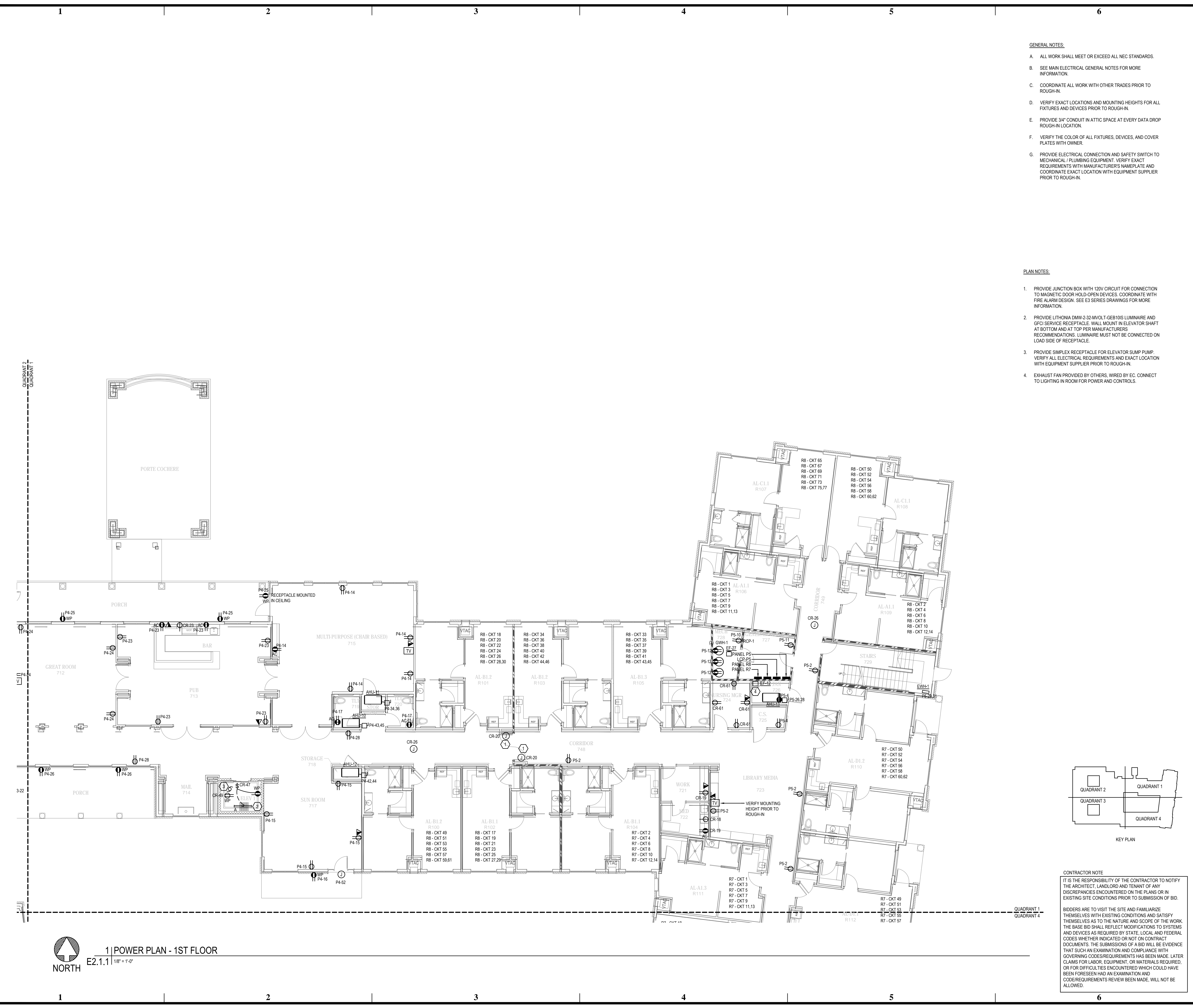
**WATERSTONE AT BATON ROUGE  
 ASSISTED LIVING & MEMORY CARE**  
 SIEGEN LANE  
 BATON ROUGE, LA 70810

ISSUE: PERMIT SET

©2015 PI ARCHITECTS, INC.  
 REVISIONS:

DATE: 03/31/2016  
 PROJECT NUMBER: PES 15090  
 SHEET TITLE: POWER PLAN - 1ST FLOOR

SHEET: E2.1.1



**1 POWER PLAN - 1ST FLOOR**  
 E2.1.1 1/8" = 1'-0"  
 NORTH

**CONTRACTOR NOTE**  
 IT IS THE RESPONSIBILITY OF THE CONTRACTOR TO NOTIFY THE ARCHITECT, LANDLORD AND TENANT OF ANY DISCREPANCIES ENCOUNTERED ON THE PLANS OR IN EXISTING SITE CONDITIONS PRIOR TO SUBMISSION OF BID.  
 BIDDERS ARE TO VISIT THE SITE AND FAMILIARIZE THEMSELVES WITH EXISTING CONDITIONS AND SATISFY THEMSELVES AS TO THE NATURE AND SCOPE OF THE WORK. THE BASE BID SHALL REFLECT MODIFICATIONS TO SYSTEMS AND DEVICES AS REQUIRED BY STATE, LOCAL AND FEDERAL CODES WHETHER INDICATED OR NOT ON CONTRACT DOCUMENTS. THE SUBMISSIONS OF A BID WILL BE EVIDENCE THAT SUCH AN EXAMINATION AND COMPLIANCE WITH GOVERNING CODES/REQUIREMENTS HAS BEEN MADE. LATER CLAIMS FOR LABOR, EQUIPMENT, OR MATERIALS REQUIRED, OR FOR DIFFICULTIES ENCOUNTERED WHICH COULD HAVE BEEN FORESEEN HAD AN EXAMINATION AND CODE/REQUIREMENTS REVIEW BEEN MADE, WILL NOT BE ALLOWED.

BIM Server: Server2012 - BIM Server (18.0)/14017 Concordia Baton Rouge | Ver: 18.001 | Wednesday, September 02, 2015 | 4:04 PM