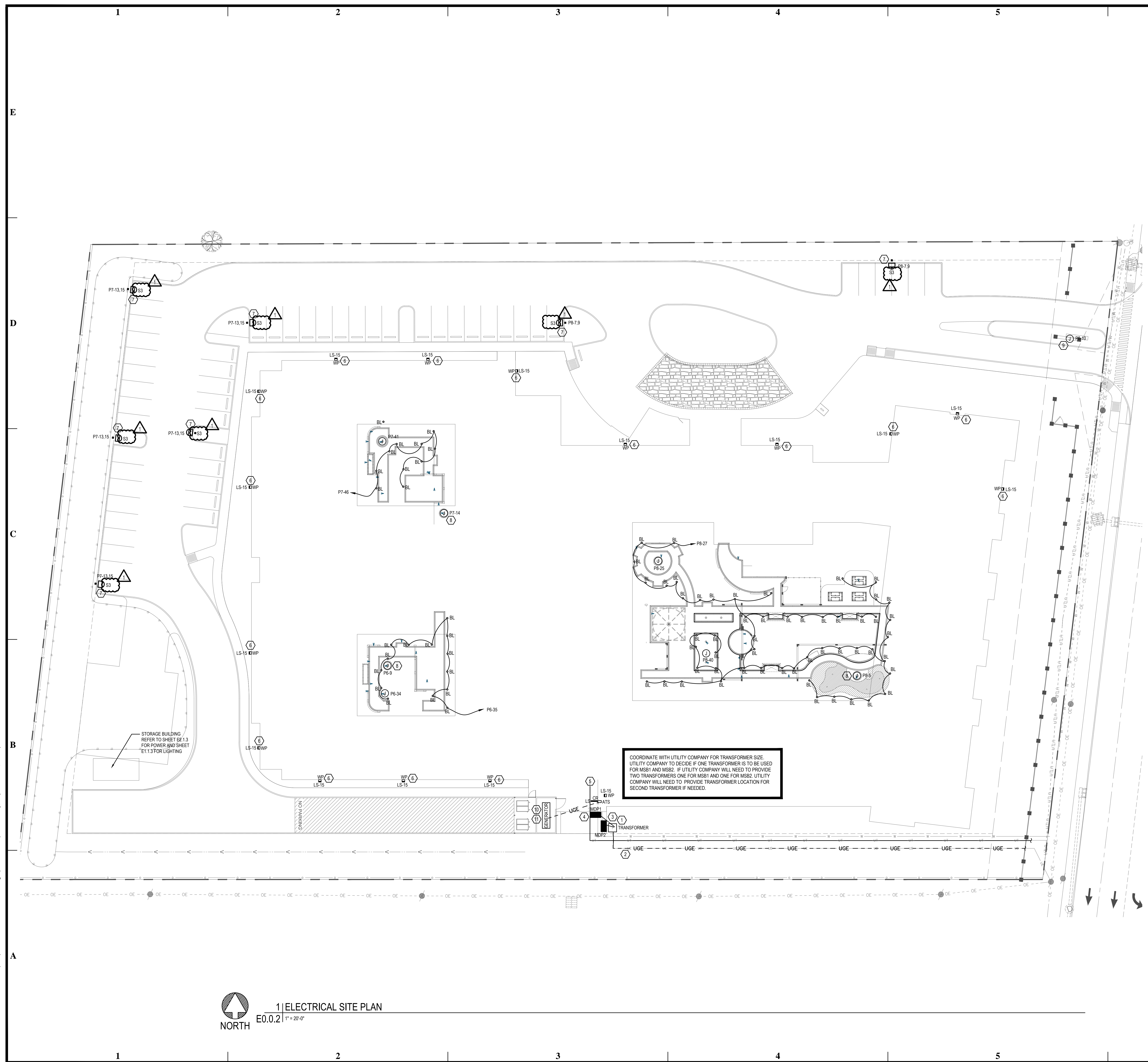


BIM Server: Saved 2012 - BIM Server (18/07/14) Concordia Baton Rouge | Ver: 18.0011 | Wednesday, September 02, 2015 | 4:04 PM



- GENERAL NOTES:**
- ALL WORK SHALL MEET OR EXCEED ALL NEC STANDARDS.
 - SEE MAIN ELECTRICAL GENERAL NOTES FOR MORE INFORMATION.
 - COORDINATE ALL WORK WITH OTHER TRADES PRIOR TO ROUGH-IN.
 - VERIFY EXACT LOCATIONS AND MOUNTING HEIGHTS FOR ALL FIXTURES AND DEVICES PRIOR TO ROUGH-IN.
 - VERIFY THE COLOR OF ALL FIXTURES, DEVICES, AND COVER PLATES WITH OWNER.
 - PROVIDE PHOTOCELL CONTROL FOR ALL EXTERIOR LIGHTING. COORDINATE ALL SETTINGS WITH OWNER.
 - ELECTRICAL CONTRACTOR SHALL CLOSELY COORDINATE THE EXACT LOCATIONS OF ALL UTILITY COMPANY CONNECTION POINTS AND REQUIREMENTS. VERIFY ALL REQUIREMENTS WITH LOCAL UTILITY COMPANIES.

- PLAN NOTES:**
- PROPOSED LOCATION OF UTILITY TRANSFORMER. ELECTRICAL CONTRACTOR SHALL PROVIDE CONCRETE PAD PER LOCAL UTILITY COMPANY SPECIFICATIONS. PROTECTION BOLLARDS SHALL BE BY GENERAL CONTRACTOR. FINAL LOCATION SHALL BE AS DETERMINED BY LOCAL UTILITY COMPANY.
 - PROVIDE (2) 4" CONDUITS TO UTILITY EASEMENT FOR PRIMARY ELECTRIC POINT OF ENTRANCE. COORDINATE EXACT ROUTING WITH UTILITY AND VERIFY EXACT DISTANCE IN FIELD.
 - PROVIDE CONDUIT AND SECONDARY SERVICE CONDUCTORS FOR ELECTRICAL SERVICE. SEE RISER DIAGRAM FOR CONDUIT AND FEEDER SIZES.
 - PROPOSED LOCATION OF ELECTRICAL SERVICE EQUIPMENT. COORDINATE EXACT LOCATION PRIOR TO ROUGH-IN.
 - PROVIDE TWO EMPTY 4" CONDUITS AND ONE EMPTY 2" CONDUIT WITH PULL STRING FOR INCOMING TELECOMMUNICATIONS SERVICES. FIELD VERIFY CONDUIT BUILDING ENTRANCE LOCATION AND CONDUIT ROUTING WITHIN BUILDING PRIOR TO BID. COORDINATE ALL REQUIREMENTS WITH OWNER/ARCHITECT AND SERVING UTILITY.
 - EXTERIOR LIGHTING AND SIGNAGE CIRCUITS SHALL BE CONTROLLED VIA CONTACTOR/PHOTOCELL. PROVIDE LIGHTING CONTRACTOR WITH NUMBER OF POLES REQUIRED. LOCATE ADJACENT TO RESPECTIVE HOUSE PANEL.
 - PROVIDE CONCRETE POLE BASE PER DETAIL #1 ON SHEET E5.3. FIELD VERIFY EXACT LOCATION PRIOR TO ROUGH-IN.
 - PROVIDE JUNCTION BOX AND 120V CONNECTION FOR POWER TO WATER FEATURE. COORDINATE EXACT LOCATION & REQUIREMENTS WITH ARCHITECT PRIOR TO ROUGH-IN.
 - PROVIDE JUNCTION BOX AND 120V CONNECTION FOR POWER TO MAIN ENTRY MONUMENT SIGN. COORDINATE EXACT LOCATION AND REQUIREMENTS WITH ARCHITECT PRIOR TO ROUGH-IN.
 - PROVIDE EMERGENCY SHUT OFF BUTTON FOR GENERATOR WITHIN 15' OF GENERATOR.
 - PROVIDE RECEPTACLE AND TASK LIGHT EQUAL TO HUBBELL TYPE VW-151 WITH 150W A21 LAMP AND VCG-15 WIREGUARD AT GENERATOR.

COORDINATE WITH UTILITY COMPANY FOR TRANSFORMER SIZE. UTILITY COMPANY TO DECIDE IF ONE TRANSFORMER IS TO BE USED FOR MSB1 AND MSB2. IF UTILITY COMPANY WILL NEED TO PROVIDE TWO TRANSFORMERS ONE FOR MSB1 AND ONE FOR MSB2. UTILITY COMPANY WILL NEED TO PROVIDE TRANSFORMER LOCATION FOR SECOND TRANSFORMER IF NEEDED.

STORAGE BUILDING REFER TO SHEET E2.1.3 FOR POWER AND SHEET E1.1.3 FOR LIGHTING

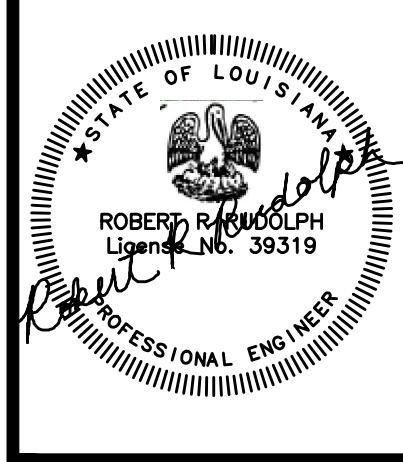
CONTRACTOR NOTE

IT IS THE RESPONSIBILITY OF THE CONTRACTOR TO NOTIFY THE ARCHITECT, LANDLORD AND TENANT OF ANY DISCREPANCIES ENCOUNTERED ON THE PLANS OR IN EXISTING SITE CONDITIONS PRIOR TO SUBMISSION OF BID.

BIDDERS ARE TO VISIT THE SITE AND FAMILIARIZE THEMSELVES WITH EXISTING CONDITIONS AND SATISFY THEMSELVES AS TO THE NATURE AND SCOPE OF THE WORK. THE BASE BID SHALL REFLECT MODIFICATIONS TO SYSTEMS AND DEVICES AS REQUIRED BY STATE, LOCAL AND FEDERAL CODES WHETHER INDICATED OR NOT ON CONTRACT DOCUMENTS. THE SUBMISSIONS OF A BID WILL BE EVIDENCE THAT SUCH AN EXAMINATION AND COMPLIANCE WITH GOVERNING CODES/REQUIREMENTS HAS BEEN MADE. LATER CLAIMS FOR LABOR, EQUIPMENT, OR MATERIALS REQUIRED, OR FOR DIFFICULTIES ENCOUNTERED WHICH COULD HAVE BEEN FORESEEN HAD AN EXAMINATION AND CODE/REQUIREMENTS REVIEW BEEN MADE, WILL NOT BE ALLOWED.

1 | ELECTRICAL SITE PLAN
E0.0.2 | 1" = 20'-0"
NORTH

pi architects
3500 Jefferson St. Suite 303
Austin, TX 78731
P: (512) 231-1910
F: (512) 231-1950
www.piarch.com
architecture + master
interior + landscape
architecture
PE SERVICE
ENGINEERS FOR YOUR SUCCESS
www.pe-service.com
These plans have been properly examined by the undersigned. I have determined that they comply with existing local Louisiana codes, and have been properly site adapted to use in this area.



**WATERSTONE AT BATON ROUGE
ASSISTED LIVING & MEMORY CARE**
SIEGEN LANE
BATON ROUGE, LA 70810

ISSUE: PERMIT SET

©2015 PI ARCHITECTS, INC.
REVISIONS:
▲ ADDENDUM #1 04-08-2016

DATE: 03/31/2016
PROJECT NUMBER: PES 15090
SHEET TITLE: ELECTRICAL SITE PLAN

SHEET: E0.0.2