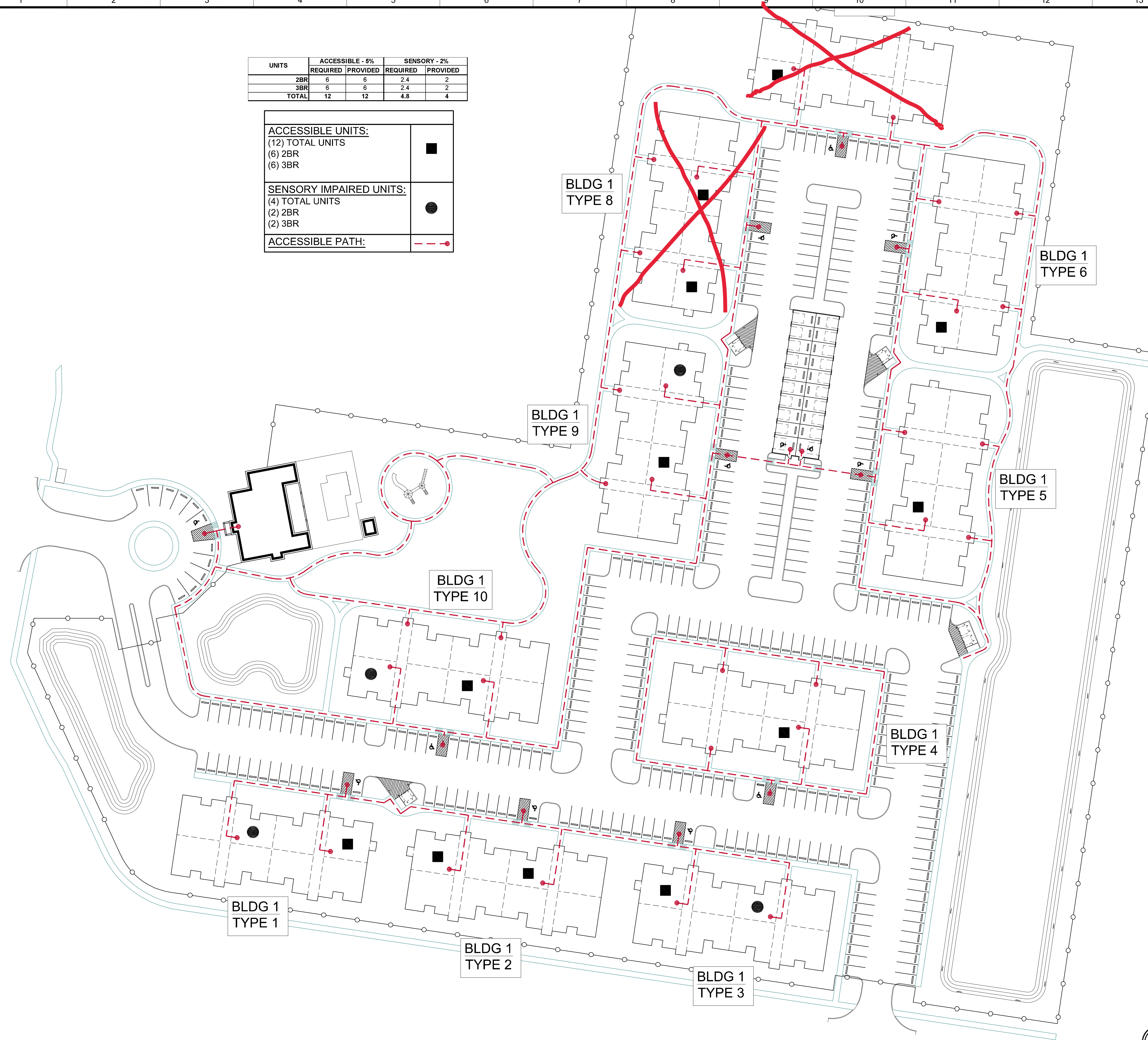
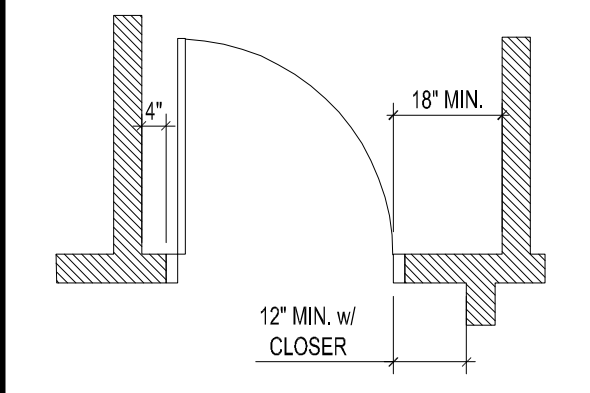


UNITS	ACCESSIBLE - 5%		SENSORY - 2%	
	REQUIRED	PROVIDED	REQUIRED	PROVIDED
2BR	6	6	2.4	2
3BR	6	6	2.4	2
<b>TOTAL</b>	<b>12</b>	<b>12</b>	<b>4.8</b>	<b>4</b>

<b>ACCESSIBLE UNITS:</b> (12) TOTAL UNITS (6) 2BR (6) 3BR	■
<b>SENSORY IMPAIRED UNITS:</b> (4) TOTAL UNITS (2) 2BR (2) 3BR	●
<b>ACCESSIBLE PATH:</b>	- - - ●

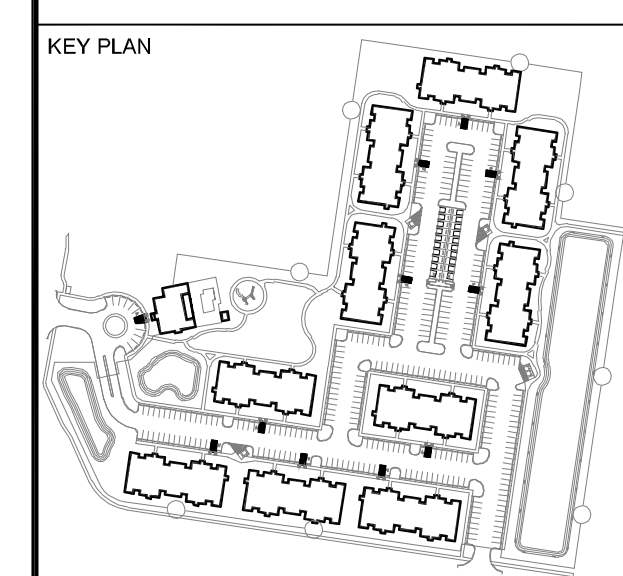


**NOTE:**  
DOOR PLACEMENT:  
UNLESS OTHERWISE DIMENSIONED ON  
PLANS, INSTALL DOORS PER THE  
FOLLOWING FINISH DIMENSIONS LISTED  
BELOW (FACE OF GWB TO FACE OF  
GWB):



**NOTE:**

- DIMENSIONS ON PLANS ARE FROM FACE OF STUD FRAMING TO FACE OF STUD.
- FRAMING WINDOW & EXTERIOR DOOR LOCATIONS ARE SHOWN FOR REFERENCE ONLY. FOR EXACT WINDOW & DOOR LOCATIONS PLEASE REFER TO FLOOR DIMENSION PLANS.



REVISIONS	DATE

SEAL

09/19/2018

OWNER  
**Brook Pointe, LP**  
1469 S. 4TH STREET  
LOUISVILLE, KY 40202  
P: 502-638-0534

ARCHITECT OF RECORD  
**STUDIO A LLC**  
2330 FRANKFORT AVE.  
Louisville, Kentucky  
Tel: 502-588-8077 Fax: 502-588-8004

DESIGN ARCHITECT  
**BRUKHAUS DESIGN**  
1469 South 4th Street Suite 310  
Louisville, KY 40208  
T: (502) 638-0534

PROJECT TITLE  
**Brook Pointe Family Apartments**  
504 N. Pierce St.  
Lafayette, LA 70501

PERMIT SET

DESIGNED BY	CHECKED BY
DRAWN BY	DATE 9/19/2018

SHEET TITLE <b>ACCESSIBLE UNIT LOCATIONS</b>	SHEET NO. <b>A011</b>
PROJECT NO. 16LD00-09	

FOR REFERENCE ONLY - SEE CIVIL DRAWINGS  
**ACCESSIBLE UNIT LOCATIONS**  
SCALE: 1" = 40'-0"  
0 10' 20' 40' 80'